

# Q2•3

Program Guide KENW-TV/FM  
Eastern New Mexico University  
December 2020

*Secret Cities*





# When to watch from *A* to *Z*

## Channel 3-2 – December 2020

*A to Z listings for 3-1 are on pages 18 & 19*

**Amanpour and Company** – Tuesdays–Thursdays, 11:00 p.m. (except 31st)  
**American Woodshop** – Thursdays, 11:00 a.m. (begins 31st)  
**America's Heartland** – Saturdays, 6:30 p.m.  
**America's Test Kitchen** – Saturdays, 8:00 a.m.; Tuesdays, 11:00 a.m.  
**Antiques Roadshow** – Mondays, 7:00 p.m./11:00 p.m.; Mondays, 8:00 p.m. (28th only); Sundays, 7:00 a.m.  
**Ask This Old House** – Saturdays, 4:00 p.m.  
**Austin City Limits** – Saturdays, 9:00 p.m. (except 5th)/12:00 midnight  
**BBC World News** – Weekdays, 6:30 a.m.  
**BBC World News America** – Weekdays, 5:30 p.m.  
**Beads, Baubles and Jewels** – Mondays, 12:30 p.m.  
**Beauty of Oil Painting** – Fridays, 12:30 p.m.; Saturdays, 12:00 noon (except 5th)  
**Body Electric** – Weekdays, 5:30 a.m.  
**Classic Arts Showcase** – Sundays–Saturdays, 1:00 a.m.–5:00 a.m.  
**Classic Gospel** – Sundays, 8:00 a.m./4:00 p.m.  
**Classic Woodworking** – Thursdays, 11:00 a.m. (ends 24th); Saturdays, 6:30 a.m.  
**Classical Stretch** – Weekdays, 6:00 a.m.  
**Closer to Truth** – Sundays, 1:30 p.m. (except 6th)  
**Consuelo Mack WealthTrack** – Fridays, 7:30 p.m.  
**Cook's Country** – Saturdays, 7:30 a.m.; Mondays, 11:00 a.m.  
**Creative Living** – Tuesdays/Thursdays, 12:00 noon; Saturdays, 2:00 p.m.; Tuesdays, 9:30 p.m. (except 1st, 29th)  
**Cultura** – Sundays, 12:00 noon (20th only)  
**Firing Line** – Fridays, 8:30 p.m. (except 4th)  
**Fishing Behind the Lines** – Wednesdays, 11:00 a.m.  
**Fons & Porter's Love of Quilting** – Saturdays, 1:30 p.m.  
**Frontline** – Tuesdays, 10:00 p.m.; Thursdays, 7:00 p.m.  
**"Growing Up Poor in America"** – 8th, 10th  
**"I Am Not a Monster"** – 15th, 17th  
**Garden Smart** – Saturdays, 10:30 a.m. (except 12th)  
**Great British Baking Show** – Saturdays, 8:30 a.m.  
**Gzero World with Ian Bremmer** – Mondays, 4:30 p.m.  
**It's Sew Easy** – Saturdays, 5:30 p.m.; Tuesdays, 12:30 p.m.  
**Jazzy Vegetarian** – Saturdays, 2:30 p.m.; Wednesdays, 4:30 p.m.  
**Joy of Music** – Sundays, 9:00 a.m.  
**Joy of Painting** – Saturdays, 11:30 a.m. (except 5th)  
**Kitchen Queens: New Orleans** – Mondays, 11:30 a.m.; Tuesdays, 4:30 p.m.  
**Knit and Crochet Now** – Tuesdays, 11:30 a.m.; Saturdays, 3:00 p.m.  
**Landscapes Through Time** – Fridays, 4:30 p.m.  
**Lawrence Welk** – Saturdays, 7:00 p.m. (except 5th)  
**Market to Market** – Fridays, 7:00 p.m.  
**Masterpiece "Miniaturist"** (3 Pts.) – Sundays, 8:00 p.m. (begins 13th); Fridays, 10:00 p.m. (begins 18th)  
**Milk Street** – Thursdays, 11:30 a.m.; Saturdays, 7:00 a.m.  
**Motorweek** – Saturdays, 9:30 a.m.  
**Music & the Spoken Word** – Sundays, 9:30 a.m.  
**Nature** – Wednesdays, 7:00 p.m.; Saturdays, 11:00 p.m.  
**"The Cheetah Children"** – 5th only  
**"Snow Bears"** – 9th, 12th  
**"Animal Odd Couples"** – 16th, 19th  
**"Snowbound: Animals of Winter"** – 23rd, 26th  
**"Cold Warriors: Wolves and Buffalo"** – 30th  
**New Mexico Colores** – Sundays, 12:00 noon (except 6th)  
**New Mexico In Focus** – Sundays, 11:00 a.m. (except 6th)  
**Nova** – Wednesdays, 8:00 p.m.; Saturdays, 10:00 p.m.  
**"Mysteries of Sleep"** – 2nd only (8:30 p.m.)  
**"Secrets of the Forbidden City"** – 5th only  
**"Bird Brain"** – 9th, 12th  
**"Rise of the Rockets"** – 9th (9:00 p.m.)  
**"Einstein's Quantum Riddle"** – 16th, 19th  
**"Apollo's Daring Mission"** – 16th (9:00 p.m.)  
**"Pluto and Beyond"** – 23rd, 26th  
**"Flying Supersonic"** – 23rd (9:00 p.m.)  
**"The Impossible Flight"** (2 Hrs.) – 30th  
**Painting and Travel** – Sundays, 6:00 a.m. (begins 6th)  
**Paint This with Jerry Yarnell** – Saturdays, 11:00 a.m. (except 5th)  
**P. Allen Smith's Garden Home** – Saturdays, 10:00 a.m. (except 12th)  
**PBS NewsHour** – Weekdays, 6:00 p.m./12:00 midnight  
**Quilt in a Day** – Saturdays, 12:30 p.m.

**Quilting Arts** – Saturdays, 1:00 p.m.; Wednesdays, 12:30 p.m.  
**Red Green Show** – Thursdays, 9:30 p.m. (10th, 17th only); Saturdays, 8:30 p.m. (except 5th)  
**Report from Santa Fe** – Saturdays, 6:00 p.m.  
**Rick Steves' Europe** – Mondays, 10:30 p.m. (except 7th)  
**Second Opinion** – Wednesdays, 10:00 p.m.; Sundays, 6:30 a.m./3:30 p.m.  
**Sewing with Nancy** – Saturdays, 5:00 p.m.  
**Sit and Be Fit** – Mondays/Wednesdays/Fridays, 12:00 noon  
**Song of the Mountains** – Thursdays, 8:00 p.m. (17th only)  
**Star Gazers** – Wednesdays, 10:57 p.m.; Saturdays, 10:57 a.m./9:57 p.m.; Sundays 2:57 p.m./10:57 p.m.; Mondays 10:57 p.m.  
**Start Up** – Wednesdays, 5:00 p.m.; Sundays, 5:00 p.m.  
**This Old House** – Saturdays, 3:30 p.m.; Wednesdays, 10:30 p.m.  
**Wai Lana Yoga** – Weekdays, 5:00 a.m.  
**Washington Week** – Fridays, 8:00 p.m.; Mondays, 5:00 p.m.  
**Welcome to My Studio** – Thursdays, 12:30 p.m.; Saturdays, 4:30 p.m.  
**Woodsmith Shop** – Wednesdays, 11:30 a.m.; Saturdays, 6:00 a.m.  
**Woodsongs** – Thursdays 10:00 p.m. (3rd, 17th only)  
**You Should Know** – Tuesdays, 9:00 p.m. (except 1st, 29th)

## Special Programs

**All is Calm: The Christmas Truce of 1914** – Thursday, 24th, 7:00 p.m.  
**American Experience** –  
**"Into the Amazon"** (with Theodore Roosevelt in 1914, 2 Hrs.) – Tuesday, 22nd, 7:00 p.m.  
**"Influenza 1918"** – Tuesday, 29th, 10:00 p.m.  
**American Masters** –  
**"Miles Davis"** (2 Hrs.) – Sunday, 6th, 10:00 p.m.  
**"Lennon NYC"** (2 Hrs.) – Friday, 11th, 10:00 p.m.  
**"Laura Ingalls Wilder: Prairie to Page"** – Tuesday, 29th, 7:00 p.m.; Thursday, 31st, 10:00 p.m.  
**Anne of Green Gables: Fire & Dew** – Tuesday, 29th, 8:30 p.m.  
**Awakening in Taos: The Mabel Dodge Luhan Story** – Sunday, 20th, 6:00 p.m.; Tuesday, 22nd, 10:00 p.m.  
**Between the Covers** – Sundays, 1:00 p.m. (begins 13th)  
**Brain Revolution** – Tuesday, 1st, 8:30 p.m.; Sunday, 6th, 12:30 p.m.  
**Call the Midwife Holiday Special 2020** – Friday, 25th, 9:00 p.m.; Sunday, 27th, 6:30 p.m.  
**Charlie Russell's Old West** – Friday, 11th, 9:00 p.m.; Sunday, 13th, 6:00 p.m.  
**Christmas at Belmont** – Tuesday, 15th, 8:00 p.m.,  
**Christmas on the Danube** – Friday, 25th, 5:00 p.m.  
**Christmastime in New Orleans** – Sunday, 13th, 5:30 p.m.; Saturday, 19th, 8:00 p.m.; Thursday, 24th, 10:30 p.m.  
**Christmas with the Tabernacle Choir featuring Kelli O'Hara and Richard Thomas** – Monday, 14th, 8:00 p.m.; Thursday, 24th, 8:30 p.m.  
**Civilizations** (9 Pts.) – Sundays, 10:00 a.m. (ends 13th)  
**Ella Wishes You a Swinging Christmas with Vanessa Williams** – Tuesday, 15th, 7:00 p.m.; Friday, 18th, 9:00 p.m.  
**ENMU Virtual Commencement Fall 2020** – Saturday, 12th, 10:00 a.m.  
**Eric Clapton's Crossroads Guitar Festival** – Thursday, 3rd, 8:00 p.m.  
**Evening with B. B. King** (one-on-one interview) – Sunday, 27th, 11:00 p.m.  
**Evening with Dionne Warwick** (interview) – Sunday, 20th, 11:00 p.m.  
**Evening with Harry Belafonte** (interview) – Sunday, 13th, 11:00 p.m.  
**Expeditions** – Thursdays, 4:30 p.m.  
**Flying J's White Mountain Christmas** – Thursday, 10th, 8:00 p.m.; Monday, 21st, 8:00 p.m.  
**Georgia O'Keeffe: A Woman on Paper** – Sunday, 27th, 6:00 p.m.; Thursday, 31st, 11:30 p.m.  
**Hank Locklin: Country Music's Timeless Tenor** – Thursday, 10th, 10:00 p.m.  
**John Denver: Country Roads – Live in England** – Wednesday, 2nd, 7:00 p.m.  
**Jon Bonamassa: Royal Tea Live** – Thursday, 3rd, 7:00 p.m.  
**Josh Groban: An Evening of Harmony** – Sunday, 6th, 7:00 p.m.  
**Ken Burns: Here & There** – Sunday, 6th, 5:30 p.m.  
**Landscapes Through Time** – Mondays, 10:00 p.m. (begins 14th)  
**Ledisi Live: A Tribute to Nina Simone** – Sunday, 6th, 8:30 p.m.  
**Lennon Sisters: Same Song, Separate Voices** – Saturday, 5th, 7:00 p.m.  
**Lifeline: Pearl Harbor's Unknown Hero** – Friday, 4th, 10:30 p.m.; Sunday, 6th, 2:00 p.m.

# Q2·3 Program Guide

THE MAGAZINE FOR THE FRIENDS OF PUBLIC BROADCASTING – DECEMBER 2020

**Q2-3 Program Guide** is published each month by the Broadcast Center, a non-profit public service division of Eastern New Mexico University.

**Q2-3 Program Guide** (Cue to 3) is available to friends contributing \$35 per year or more to the support of public broadcasting. Senior Citizen and Student memberships are available for \$25. All contributions are tax deductible. Donations should be made payable to Friends of **KENW-TV** or to Friends of **KENW-FM** or **KMTH-FM**.

**KENW-TV digital transmitters** are located in: Artesia; Carlsbad; Ft. Sumner; Hobbs; Portales; Clovis; Roswell; Tucumcari; Ruidoso; Mescalero

**KENW-FM**, 89.5 MHz, Portales; **KMTH-FM**, 98.7 MHz, Maljamar; **KENM-FM**, 88.9 MHz, Tucumcari; NM; **KENU-FM**, 88.5 MHz, Des Moines, NM; **KENG-FM**, 88.5 MHz; Ruidoso, NM; **KENE-FM**, 88.1 MHz, Raton, and FM translators in:  
Apache Springs - 90.9 MHz Las Vegas - 88.1 MHz  
Clayton - 93.5 MHz Roswell - 91.1 MHz  
Des Moines - 106.1 MHz Wagon Mound - 92.1 MHz  
Ft. Sumner - 91.7 MHz

**Telephone:** Cannon A.F.B., Clovis, Portales, and Roosevelt County, call (575) 562-2112. Others, toll-free 1-888-FOR-KENW (367-5369).

**Fax:** (575) 562-2590

**Mailing Address:**

KENW-TV/FM  
52 Broadcast Center, ENMU  
1500 South Avenue K  
Portales, NM 88130

**Web site:** [www.kenw.org](http://www.kenw.org)

**E-Mail:** [kenwtv@enmu.edu](mailto:kenwtv@enmu.edu)  
[kenwfm@enmu.edu](mailto:kenwfm@enmu.edu)

## Q2·3 Program Guide Staff

Editor:	Linda Stefanovic
Editorial Assistant	Vickie Brisco
Program Log Descriptions:	Evelyn Ledbetter

**We always welcome your comments and/or suggestions:**

**Toll-free 1-888-FOR-KENW (367-5369)**

- Secret Cities** reveals the hidden histories in three iconic European landmarks: St. Peter's Basilica in Rome, the Sacré Coeur in Paris, and London's underground megastructures. **American Masters** premieres "Laura Ingalls Wilder: From Prairie to Page," which takes an unvarnished look at the unlikely author.
- In the **Call the Midwife Holiday Special 2020**, everyone at Nonnatus House is looking forward to a traditional Christmas, but not all things go as planned. **Charlie Russell's Old West** tells the story of the self-taught artist whose authentic and treasured work depict an iconic era in Western history. In **Ella Wishes You a Swinging Christmas**, the First Lady of Song offers listeners a collection of holiday favorites recorded in 1960 for her joyous album of the same name. **All is Calm: The Christmas Truce of 1914** is a docu-musical theatre production based on real-life events during World War I.
- Between the Covers** is a new weekly series that takes viewers on a literary odyssey through best-selling works of fiction, non-fiction, and other genres. Hosted by Bernadette Peters, **Live From Lincoln Center** and the New York Philharmonic celebrate the dazzling orchestral world of Stephen Sondheim. **Remember Pearl Harbor** shares the personal accounts of veterans and citizens who witnessed the surprise attack. **The Portillo Expedition: Mystery at Bougainville Island** follows an expedition to recover the wreckage of the plane carrying the Japanese general who planned the attack on Pearl Harbor. **Lifeline: Pearl Harbor's Unknown Hero** tells the story of a U.S. Navy sailor who ignored a direct order to save several lives during the attack. **Ken Burns: Here & There** gives an inside look into the life of the legendary filmmaker and his four-decade career. **The Brain Revolution** provides a comprehensive and easy-to-follow plan for protecting and optimizing your brain.
- Josh Groban: An Evening of Harmony** features highlights from his virtual tour. **Stevie Nicks 24 Karat Gold Tour** features fan favorites and rare gems from her legendary career. In **Ledisi: A Tribute to Nina Simone**, the 12-time-Grammy-nominated vocalist performs classics honoring her greatest inspiration. **Master Your Future** endeavors to change the way we think about, plan for, and navigate our retirement. **Joe Bonamassa: Royal Tea Live** showcases the legendary guitarist's new studio album.

Eastern New Mexico University is an affirmative action and equal opportunity employer. The University does not discriminate on the basis of race, color, national origin, sex, or handicap in its programs, activities, or employment. Persons seeking additional information about the University's nondiscrimination policy should contact the Executive Director of Planning & Analysis, ENMU, Station #2, Portales, NM 88130.

## Special Programs continued –

### Live From Lincoln Center "NY Philharmonic:

**Sondheim Celebration** – Thursday, 31st, 7:00 p.m.

**Magic of Christmas in Alsace** – Saturday, 12th, 8:00 p.m.;  
Sunday, 20th, 5:30 p.m.

**Master Your Future** – Saturday, 5th, 11:00 a.m.

**Medical Stories** (5 Pts.) – Sundays, 3:00 p.m. (begins 13th)

**Modern Pioneering** (8 Pts.) – Tuesdays, 5:00 p.m. (begins 22nd)

**Ornament of the World** (2 Hrs.) – Tuesday, 8th, 7:00 p.m.;  
Sunday, 27th, 9:00 p.m.

**Peter, Paul & Mommy, Too** – Friday, 4th, 8:30 p.m.

**Portillo Expedition: Mystery at Bougainville Island** –  
Monday, 7th, 9:30 p.m.

**Reconstruction: America After the Civil War** (two 2 Hr. episodes) –  
Sundays, 13th and 20th, 9:00 p.m.

**Remember Pearl Harbor** – Monday, 7th, 8:00 p.m.

**Rick Steves' European Travel Tips/Tricks** – Sunday, 6th, 11:00 a.m.

**RVers** (12 Pts.) – Sundays, 12:30 p.m. (except 6th);  
Thursdays, 5:00 p.m.

### Scotland's Scenic Railways (3 Pts.) –

Sundays, 2:00 p.m. (begins 13th); Mondays, 9:00 p.m. (begins 14th)

**Secret Cities** (3 Pts.) – Sundays, 7:00 p.m. (begins 13th, except 27th);  
Sundays, 10:00 a.m. (begins 20th)

**Secrets of Royal Travel** (2 Pts.) –

"Train" – Friday, 18th, 11:00 p.m.

"Flight" – Friday, 25th, 11:30 p.m.

**St. Olaf Christmas Festival** – Thursday, 24th, 9:30 p.m.

**Stevie Nicks: 24 Karat Gold Tour** – Saturday, 5th, 8:30 p.m.

**Today's Wild West** – Tuesdays, 5:00 p.m. (ends 15th);  
Thursdays, 9:00 p.m. (10th, 17th only)

**Travel Detective VI** – Saturdays, 8:00 p.m. (26th only)

**United in Song: Celebrating the Resilience of America** –  
Thursday, 31st, 8:30 p.m.

**Unlikely Friendship** – Sunday, 27th, 5:30 p.m.

**What to Eat When** – Tuesday, 1st, 7:00 p.m.

**Wilder Than Wild, Fire, Forests and the Future** –  
Tuesday, 1st, 10:00 p.m.

**Secret Cities** reveals the secrets and histories hidden in three iconic European landmarks: Rome's St. Peter's Basilica, the Sacré Coeur in Paris and London's underground megastructures.

### ***Rome: Saint Peter's Basilica***

Saint Peter's Basilica in Rome is the largest architectural design of its time and one of the most visited monuments in the world. With a capacity of 60,000 people, the Basilica is four times larger than Notre Dame in Paris and, to this day, remains among Christianity's holiest places. Catholic tradition holds that the Basilica is built upon the burial site of Saint Peter, chief among Jesus' disciples and the first Bishop of Rome.

The Basilica's expansive and massive construction took more than a century to complete and, for centuries, it stood as the largest Christian church in the world. The Protestant Reformation, led by Martin Luther, was partially born from the premise that the construction of St. Peter's Basilica was a symbol of the papacy's delusions of grandeur. Pictured above is St. Peter's Throne with Holy Spirit Dove in stained glass by Bernini in the 1600s.

### ***Paris: The Sacré Coeur***

In 1870 war broke out between France and Germany and France was defeated and partially occupied by German troops. Two Parisian Catholics believed that France's loss was due to spiritual shortcomings and vowed to build a church dedicated to the Sacred Heart "as reparation" (i.e. as penance for infidelity and sin). They held that the misfortunes of France had spiritual rather than political causes.



## ***Secret Cities***

Every year, as the result of their efforts, the Sacré Coeur welcomes more than eleven million visitors. It is the most visited place in Paris after Notre-Dame. With its gigantic, rounded roof and its amazing bell (at 19 tons, the biggest in France), this mega structure is second only to the Eiffel Tower as the city's highest point.

Construction began in 1875 and, for almost half a century, seven architects combined to overcome the challenges

of completion. Pictured on the cover is the mosaic ceiling inside the Sacré Coeur.

### ***London: The Underground Megastructures***

Throughout centuries, London has become one of the world's greatest cities, but perhaps its greatest architectural achievements are hidden from view. London's history has always been tied to its underground. During the 19th century, dozens of subway tunnels were built, shoring miles of railways beneath thousands of building foundations. In July 1940, the Battle of Britain against the Luftwaffe aircraft spanned more than three months, killing 30,000 British citizens. But this war did not just happen in the sky. In the depths of London citizens took shelter in the intricate maze of hidden underground structures that saved lives daily.

**Secret Cities** airs on 3-2 Sundays at 7:00 p.m. beginning the 13th (except 27th) and Sundays at 10:00 a.m. beginning the 20th. On 3-1 it can be seen Mondays at 7:00 p.m. beginning the 14th and Tuesdays at 1:00 p.m. beginning the 15th.

**American  
MASTERS**

## **Laura Ingalls Wilder: Prairie to Page**

**American Masters** "Laura Ingalls Wilder: Prairie to Page" presents an unvarnished look at the unlikely author whose autobiographical fiction helped shape American ideas of the frontier and self-reliance.

A Midwestern farm woman who published her first novel at age 65, Laura Ingalls Wilder transformed her frontier childhood into the best-selling *Little House* series, a process that involved a little-known collaboration with her daughter Rose. This year marks the 85th anniversary of the publication of *Little House on the Prairie* (1935).

Starting with *Little House in the Big Woods* (1932), the books chronicle the adventures of a family struggling to survive on the American frontier and have inspired four generations with the courage and determination of their heroine. Though Wilder's stories emphasized real life and celebrated stoicism, she omitted the grimmer and contradictory details of her personal history: grinding poverty, government assistance, deprivation and the death of her infant son. In recent years, Wilder's depictions of American Indians and Black people have stirred controversy, and made her less appealing to some readers, teachers and librarians.



**LtoR: Carrie, Mary and Laura Ingalls, c. 1879, and Laura and Almanzo Wilder, c. 1885**

Featuring never-before-published letters, photographs and family artifacts, the film explores the context in which Wilder lived and wrote, as well as the true nature of her personality. The film reveals the truth behind the bestsellers, exploring a rags to riches story that has been embraced by millions of people worldwide.

**American Masters** "Laura Ingalls Wilder: Prairie to Page" can be seen on 3-2 Tuesday, the 29th at 7:00 p.m. and Thursday, the 31st at 10:00 p.m. It will be broadcast on 3-1 Thursday, the 31st at 8:30 p.m.



## Call the Midwife Holiday Special 2020

This year's **Call the Midwife Holiday Special** is set in December 1965. Everyone at Nonnatus House is looking forward to a traditional Christmas with all of the trimmings, but things don't go as planned. Poor Sister Monica Joan is rushed to the hospital, while Trixie is incensed to receive a subscription to a Marriage Bureau as a Christmas gift! (And in case you were wondering, a Marriage Bureau is "an establishment which arranges introductions between people who want to get married.") There's also an exciting adventure for Nurse Crane. Meanwhile,



former Doctor Who star Peter Davison appears as the Ringmaster of Percival's Circus, which arrives in Poplar bringing new friendships and new experiences.

The **Holiday Special** will not include Jennifer Kirby (Nurse Valerie Dyer), who sadly has decided to leave the show.

Seasons 10 and 11 of **Call the Midwife** have already been commissioned and will take the series to 2022 at least. Season 10 premieres early in 2021 with seven new episodes.

**Call the Midwife Holiday Special** can be seen on 3-2 Friday, the 25th at 9:00 p.m. and Sunday, the 27th at 6:30 p.m. It will be broadcast on 3-1 Saturday, the 26th at 8:00 p.m.

## Charlie Russell's *Old West*

**Charlie Russell's Old West** tells the story of the self-taught artist who, by the time he died in 1926, was the highest paid artist in America, and today, celebrated worldwide.



Russell's art depicted a period in Western history when vast herds of buffalo roamed the land, Native Americans practiced traditional ways, and cowboys drove cattle from Texas to the bountiful Montana high plains. It was an era of romance and adventure—and tragedy. Russell chronicled it all.

From the "Big Die Up" during the winter of 1886-87 to the end of the Indian Wars and the destruction of Native Americans' traditional way of life, Russell told the story of a vanishing Wild West from multiple perspectives. He is celebrated as the cowboy artist, but in many respects he became a Native American artist, too. His work is acclaimed not only for its beauty, but its authenticity and record of an iconic American West, treasured by collectors, galleries, museums, cowboys and native, tribal people.

**Charlie Russell's Old West** airs on 3-2 Friday, the 11th at 9:00 p.m. and Sunday, the 13th at 6:00 p.m. On 3-1 it airs Saturday, the 12th at 9:00 p.m. and Tuesday, the 22nd at 8:00 p.m.



## Ella Wishes You a Swinging Christmas

In **Ella Wishes You a Swinging Christmas**, enjoy vocal legend Ella Fitzgerald in an evening celebrating her entire iconic album of holiday classics recorded in 1960 at the peak of her interpretive powers.

Ella puts her singular stamp on everything from a sultry vamp like "What Are You Doing New Year's Eve" to the sweet and cozy "The Christmas Song"—twelve happy, winter songs. Even standards like "Santa Claus Is Comin' to Town" sound fresher when they're coming from Ella Fitzgerald.

The hour-long special is hosted by vocalist Vanessa Williams with appearances from Dee Dee Bridgewater, Norm Lewis, Carmen Ruby Floyd, Nova Payton, Dave Detwiler and Morgan James.

**Ella Wishes You a Swinging Christmas** airs on 3-2 Tuesday, the 15th at 7:00 p.m. and Friday, the 18th at 9:00 p.m. On 3-1, it airs Saturday, the 19th at 7:00 p.m.

## All is Calm: The Christmas Truce of 1914

The Western Front. Christmas. 1914. Out of the violence comes a silence, then a song. A German soldier steps into No Man's Land singing "Stille Nacht." Thus begins an extraordinary night of camaraderie, music and peace.

**All is Calm: The Christmas Truce of 1914** is an award-winning docu-musical theatre production based on real-life events during World War I. It recreates an astounding moment in history when soldiers from France, England and Germany laid down their arms to celebrate the holiday together by trading carols, sharing food and drink, playing soccer and burying the dead.



This remarkable story is told through the words of the great WWI poets, official war documents, diary entries and letters written by more than thirty WWI soldiers. The historic documents are woven together with iconic WWI songs and European Christmas carols to create a profound retelling of this extraordinary moment in history. Hailed as a "beautiful musical recounting of a World War I cease-fire of gifts, poetry, and melody," by *The New York Times*, this heartwarming presentation reminds us of the indomability of the holiday spirit—even under the most dire circumstances.

**All is Calm: The Christmas Truce of 1914** can be seen on 3-2 Thursday, the 24th at 7:00 p.m. On 3-1, it will be broadcast Thursday, the 24th at 8:30 p.m.



**Between the Covers** with host Ann Bocock takes viewers on a literary odyssey through best-selling works of fiction, non-fiction, and an exciting variety of additional genres.

This new weekly series offers the opportunity to meet your favorite author or introduce you to new voices in the literary world. Bocock interviews nationally recognized authors and we learn about their creative processes, their stories, their struggles and successes during the half-hour program.

**Between the Covers** will be broadcast on 3-2 Sundays at 1:00 p.m. beginning the 13th.

## LIVE FROM LINCOLN CENTER Sondheim Celebration

In a **Live From Lincoln Center** presentation, the New York Philharmonic celebrates the dazzling orchestral world of Stephen Sondheim in a program hosted by Bernadette Peters, with special guest Tony Award-winner Katrina Lenk (shown).

The 90-minute concert features some of Sondheim's most beloved works, including selections from "Sunday in the Park," "Into the Woods," "A Little Night Music," "Assassins," "Sweeney Todd" and more.

**Live From Lincoln Center** "New Years Eve: Sondheim Celebration" airs on 3-2 Thursday, the 31st at 7:00 p.m.



## Ken Burns: Here & There

**Ken Burns: Here & There** is a poetic and personal look inside the legendary filmmaker's life and four-decade career. Footage of Burns at work and at home and interviews with close collaborators provide illuminating insights into the man.

Burns reveals his life's path, from struggling young filmmaker to award-winning director and producer of some of the most acclaimed historical documentaries ever made, including *The Civil War*, *Baseball*, *Jazz*, *The National Parks*, *Country Music* and *The Vietnam War*.

Burns believes that film has the power to inspire people to action. After the broadcast of *National Parks*, the U.S. Secretary of the Interior called to report that attendance had increased by 15 million visitors.

**Ken Burns: Here & There** airs on 3-2 Sunday, the 12th at 5:30 p.m. On 3-1, it airs Wednesday, the 2nd at 7:00 p.m.

## Remember Pearl Harbor

Narrated by actor Tom Selleck, **Remember Pearl Harbor** chronicles the personal stories of veterans and citizens who witnessed the surprise attack by the Japanese on the American Pacific Fleet on December 7, 1941, launching the United States into World War II.

The film shows in detail the bombings on Oahu, along with the fiery explosion of the USS Arizona, the sinking of the USS Oklahoma, and the attacks on Hickam Field.

**Remember Pearl Harbor** airs on 3-2 Monday, the 7th at 8:00 p.m. See it on 3-1 Sunday, the 6th at 10:30 p.m.



The USS Arizona is ablaze, just after her forward magazines exploded. The bow of the USS Vestal is visible at the left.

## The Portillo Expedition: Mystery at Bougainville Island

**The Portillo Expedition** follows a crew of American explorers to a remote Pacific island in the western Solomon Islands to locate the wreckage from the plane carrying infamous Japanese Admiral Isoroku Yamamoto, the architect of the Pearl Harbor attack and the Battle of Midway.

Yamamoto's bomber was shot down by American P-38 fighter planes on April 18, 1943 in a top-secret mission accomplished by breaking the Japanese naval code. The assassination of Admiral Yamamoto changed the outcome of the war in the Pacific.

**The Portillo Expedition** will be broadcast on 3-2 Monday, the 7th at 9:30 p.m. It airs on 3-1 Sunday, the 13th at 10:30 p.m.

## LIFELINE: Pearl Harbor's Unknown Hero

**Lifeline: Pearl Harbor's Unknown Hero** tells the story of how U.S. Navy sailor Joe George became an unlikely hero when the Japanese attacked Pearl Harbor in Hawaii.

On the day of the attack, George was on board the USS Vestal, which was moored alongside the burning and sinking USS Arizona. He could see that crewmen were trapped as fire raged on the Arizona's deck beneath them. Ignoring a direct order to cut the lines from the USS Vestal, the sailor made a crucial decision that saved lives.

**Lifeline: Pearl Harbor's Unknown Hero** airs on 3-2 Friday, the 4th at 10:30 p.m. and Sunday, 6th at 2:00 p.m. It airs on 3-1 Monday, the 7th at 7:00 p.m.

## The Brain Revolution

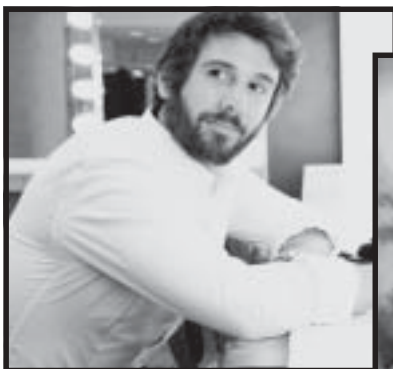
Today's 50-year-old will likely live into their mid-80s and there's a more than even probability that their brain will decline in function before they die. Difficulty with remembering, performing complex tasks and many other cognitive functions that once came easily begin to slip away. But new scientific research into neuroplasticity is revealing how to combat this dire prognosis.

**The Brain Revolution** provides the most comprehensive and easy-to-follow plan for maximizing and protecting the brain for a lifetime. Examples of people with transformational experiences and interviews with the scientists and experts who helped make it all possible offer engaging insights into this life-changing plan.

**The Brain Revolution** airs on 3-2 Tuesday, the 1st at 8:30 p.m. and Sunday, the 6th at 12:30 p.m. Watch it on 3-1 Friday, the 4th at 7:00 p.m.

# Winterfest

November 28th to  
December 6th



Josh Groban

## Josh Groban: An Evening of Harmony

In celebration of his new album *Harmony*, Josh Groban is taking fans on a virtual concert tour this fall with a series of new, intimate concerts. Each show will be filmed and live-streamed directly to audiences all over the world. The album is a collection of fan favorites and songs they have asked him to perform over the years.

**Josh Groban: An Evening of Harmony** offers PBS viewers an exclusive inside look at Groban's virtual concert tour. The musical special features highlights from select shows and includes well-known songs such as "The Impossible Dream," "I Can't Make You Love Me," "She," "The First Time Ever I Saw Your Face," and numerous never-before-seen performances captured specifically for PBS viewers.

**Josh Groban: An Evening of Harmony** can be seen on 3-2 Sunday, the 6th at 7:00 p.m. It will be broadcast on 3-1 Saturday, the 5th at 8:30 p.m.



Stevie Nicks

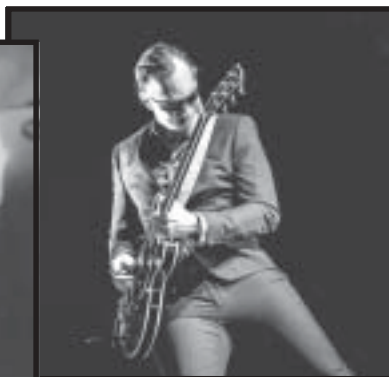
## Stevie Nicks 24 Karat Gold Tour

**Stevie Nicks 24 Karat Gold Tour** is full of the magic that Stevie Nicks brings to her live performances and is an unforgettable experience.

Recorded over two nights during her sold-out 24 Karat Gold Tour, this concert features a set-list of fan favorites and rare gems from Stevie's multi-platinum selling catalog.

Widely considered one of the most important female voices in rock music with an unparalleled career, Stevie Nicks has had six Top Ten albums, 8 Grammy nominations and is the first woman to be twice inducted into the Rock & Roll Hall of Fame—with Fleetwood Mac in 1998 and as a solo artist in 2019.

**Stevie Nicks 24 Karat Gold Tour** will be broadcast on 3-2 Saturday, the 5th at 8:30 p.m. It can be seen on 3-1 Sunday, the 6th at 5:30 p.m.



Joe Bonamassa

## Joe Bonamassa: Royal Tea Live

**Joe Bonamassa: Royal Tea Live** is a new solo studio album inspired by his British guitar heroes Jeff Beck, John Mayall & The Bluesbreakers, Eric Clapton and Cream.

Bonomassa is known for taking risks and venturing into uncharted territory throughout his wide-ranging career, but now he has found a new way to surprise his fans and music lovers. *Royal Tea* brings Bonamassa full circle.

"This whole adventure," admits Joe, "was a bucket-list thing for me." This album reconnects the 43-year-old with the guitar-slinging kid from upstate New York, who stumbled across the best of British blues music in his dad's vinyl collection, whose influences have shaped him to be the player he is today. "I would have been about twelve years old, and it was the sound I heard in my head. Like, 'OK, I'm in. That's what I want to be.'"

**Joe Bonamassa: Royal Tea Live** can be seen on 3-2 Thursday, the 3rd at 7:00 p.m.



Ledisi

## Ledisi Live: A Tribute to Nina Simone

**Ledisi Live: A Tribute to Nina Simone** is a beautifully orchestrated mixture of classical, jazz and rhythm & blues sounds, with a riveting narrative focused on the musical bond between an artist influenced by a legend from the past. Ledisi returns to her jazz roots while performing classics honoring one of her greatest inspirations—the fabulous Nina Simone—who sang a mix of jazz, blues and folk music in the 1950s and 60s.

Ledisi is a 12-time-Grammy-nominated powerhouse vocalist with a career spanning almost two decades. Performances by her in the Simone tribute include "My Baby Just Cares for Me," "Four Women," "I Put a Spell on You" and "Trouble in Mind."

**Ledisi Live: A Tribute to Nina Simone** will be broadcast on 3-2 Sunday, the 6th at 8:30 p.m. It can be seen on 3-1 Tuesday, the 1st at 7:00 p.m.

## Master Your Future

In **Master Your Future**, the goal of host Rajiv Nagaich is to change the way Americans think about, plan for, and navigate through retirement. Nagaich is an elder attorney and an expert on eldercare law, including trusts and estate planning.

With ten thousand people turning 65 every day, maybe you are one of those who are feeling the trifecta of retirement fears: fear of ending up in an institution, fear of becoming a burden, and fear of running out of money. These are the biggest retirement concerns and are even worse for families with small to medium size estates.

An effective retirement plan should be multi-disciplinary, involving coordinated plans for health, housing, legal and family issues, in addition to financial matters. Nagaich's multi-disciplinary approach to retirement planning has transformed the way millions of people think about, plan for and experience retirement.

**Master Your Future** airs on 3-2 Saturday, the 5th at 11:00 a.m. Watch it on 3-1 Wednesday, the 2nd at 8:30 p.m.



# ◆ KENW-TV's DAYTIME SCHEDULES ◆

## Kids' Programming, How-to's, and Family Viewing

**KENW-TV, Channel 3-4, Schedule for FNX available at [fnx.org/schedule](http://fnx.org/schedule).**

### Channel 3-2

#### Monday through Friday

5:00 am	Wai Lana Yoga
5:30 am	Body Electric
6:00 am	Classical Stretch
6:30 am	BBC World News
7:00 am	Molly of Denali
7:30 am	Wild Kratts
8:00 am	Hero Elementary
8:30 am	Xavier Riddle and the Secret Museum
9:00 am	Curious George
9:30 am	Daniel Tiger's Neighborhood
10:00 am	Daniel Tiger's Neighborhood
10:30 am	Elinor Wonders Why
11:00 am	Cook's Country (M)
	America's Test Kitchen (Tu)
	Fishing Behind the Lines (W)
	Classic Woodworking (Th)
	(American Woodshop begins 31st)
	SciGirls (F)
11:30 am	Kitchen Queens: New Orleans (M)
	Knit and Crochet Now (Tu)
	Woodsmith Shop (W)
	Milk Street (Th)
	Mister Rogers (F)
12:00 pm	Sit and Be Fit (MWF)
	Creative Living (TuTh)
12:30 pm	Beads, Baubles and Jewels (M)
	It's Sew Easy (Tu)
	Quilting Arts (W)
	Welcome to My Studio (Th)
	Beauty of Oil Painting (F)
1:00 pm	Sesame Street
1:30 pm	Pinkalicious & Peterrific
2:00 pm	Clifford the Big Red Dog
2:30 pm	Let's Go Luna!
3:00 pm	Arthur
3:30 pm	Ready, Jet, Go!
4:00 pm	Odd Squad
4:30 pm	Gzero World with Ian Bremmer (M)
	Kitchen Queens: New Orleans (Tu)
	Jazzy Vegetarian (W)
	Expeditions (Th)
	Landscapes Through Time (F)
5:00 pm	Washington Week (M)
	Today's Wild West (Tu)
	(Modern Pioneer begins 22nd)
	Start Up (W)
	RVers (Th)
	Specials (F)
5:30 pm	BBC World News America
6:00 pm	PBS NewsHour

### Channel 3-3

#### Monday through Friday

5:00 am	Molly of Denali
5:30 am	Ready, Jet, Go!
6:00 am	Hero Elementary
6:30 am	Xavier Riddle and the Secret Museum
7:00 am	Curious George
7:30 am	Daniel Tiger's Neighborhood
8:00 am	Daniel Tiger's Neighborhood
8:30 am	Elinor Wonders Why
9:00 am	Sesame Street
9:30 am	Pinkalicious & Peterrific
10:00 am	Dinosaur Train
10:30 am	Clifford the Big Red Dog
11:00 am	Sesame Street
11:30 am	Elinor Wonders Why
12:00 pm	Hero Elementary
12:30 pm	Let's Go Luna!
1:00 pm	Nature Cat
1:30 pm	Wild Kratts
2:00 pm	Molly of Denali
2:30 pm	Xavier Riddle and the Secret Museum
3:00 pm	Odd Squad
3:30 pm	Arthur
4:00 pm	Cat in the Hat
4:30 pm	Peg + Cat
5:00 pm	Sesame Street
5:30 pm	Pinkalicious & Peterrific
6:00 pm	Nature Cat
6:30 pm	Wild Kratts
7:00 pm	Molly of Denali
7:30 pm	Xavier Riddle and the Secret Museum
8:00 pm	Odd Squad
8:30 pm	Arthur

#### Saturday

5:00 am	Molly of Denali
5:30 am	Mister Rogers
6:00 am	Hero Elementary
6:30 am	Xavier Riddle and the Secret Museum
7:00 am	Curious George
7:30 am	Daniel Tiger's Neighborhood
8:00 am	Daniel Tiger's Neighborhood
8:30 am	Elinor Wonders Why
9:00 am	Sesame Street
9:30 am	Pinkalicious & Peterrific
10:00 am	Splash and Bubbles
10:30 am	Cyberchase
11:00 am	Mister Rogers
11:30 am	Hero Elementary
12:00 pm	Sesame Street
12:30 pm	Daniel Tiger's Neighborhood
1:00 pm	Pinkalicious & Peterrific
1:30 pm	Molly of Denali
2:00 pm	Xavier Riddle and the Secret Museum
2:30 pm	Kid Stew
3:00 pm	Molly of Denali
3:30 pm	Wild Kratts
4:00 pm	SciGirls
4:30 pm	Arthur
5:00 pm	Hero Elementary
5:30 pm	Cyberchase
6:00 pm	Elinor Wonders Why
6:30 pm	Daniel Tiger's Neighborhood
7:00 pm	Wild Kratts
7:30 pm	SciGirls
8:00 pm	Arthur
8:30 pm	Mister Rogers

#### Sunday

5:00 am	Molly of Denali
5:30 am	Mister Rogers
6:00 am	Hero Elementary
6:30 am	Xavier Riddle and the Secret Museum
7:00 am	Curious George
7:30 am	Daniel Tiger's Neighborhood
8:00 am	Daniel Tiger's Neighborhood
8:30 am	Elinor Wonders Why
9:00 am	Sesame Street
9:30 am	Pinkalicious & Peterrific
10:00 am	Splash and Bubbles
10:30 am	Cyberchase
11:00 am	Mister Rogers
11:30 am	Hero Elementary
12:00 pm	Sesame Street
12:30 pm	Daniel Tiger's Neighborhood
1:00 pm	Pinkalicious & Peterrific
1:30 pm	Molly of Denali
2:00 pm	Xavier Riddle and the Secret Museum
2:30 pm	Kid Stew
3:00 pm	Molly of Denali
3:30 pm	Wild Kratts
4:00 pm	SciGirls
4:30 pm	Arthur
5:00 pm	Hero Elementary
5:30 pm	Cyberchase
6:00 pm	Elinor Wonders Why
6:30 pm	Daniel Tiger's Neighborhood
7:00 pm	Wild Kratts
7:30 pm	SciGirls



### Channel 3-1

#### Saturday

5:00 am	Mister Rogers
5:30 am	Arthur
6:00 am	Molly of Denali
6:30 am	Wild Kratts
7:00 am	Hero Elementary
7:30 am	Xavier Riddle & the Secret Museum
8:00 am	Curious George
8:30 am	Daniel Tiger's Neighborhood
9:00 am	Daniel Tiger's Neighborhood
9:30 am	Elinor Wonders Why
10:00 am	Sesame Street
10:30 am	Pinkalicious & Peterrific

#### Sunday

5:00 am	Mister Rogers
5:30 am	Arthur
6:00 am	Molly of Denali
6:30 am	Wild Kratts
7:00 am	Hero Elementary
7:30 am	Xavier Riddle & the Secret Museum
8:00 am	Curious George
8:30 am	Daniel Tiger's Neighborhood
9:00 am	Daniel Tiger's Neighborhood
9:30 am	Elinor Wonders Why
10:00 am	Sesame Street
10:30 am	Pinkalicious & Peterrific



# KENW TV SCHEDULES 3-1 (HD), 3-2 (SD) AND 3-3 (SD)

KENW-TV Channel (3-2) is listed below in bold. It can be seen by those who use cable or one of our analog translators listed on page 3. Schedule 3-1 is our High Definition (HD) Channel, 3-3 is our Children's/Encore Standard Definition Channel (SD), and 3-4 is our FNX Channel (First Nation Experience). Those with either digital TV sets or analog sets with converter boxes (both require antennas) can receive all four channels in most parts of our viewing area. KENW-TV has digital transmitters in the following cities: Clovis/Portales; Hobbs/Lovington; Roswell; Artesia; Fort Sumner; Tucumcari; Carlsbad; Ruidoso; Mescalero.

**KENW-TV's 3-1 schedule (below in italics) is carried by DirecTV in most counties of New Mexico.**

**KENW-TV's 3-2 schedule (below in bold) is carried on Dish network in most counties of New Mexico.**

## Tuesday 1st

5:00	3-1	<i>Classical Stretch</i>
5:30	3-1	<i>Wai Lana Yoga</i>
6:00	3-1	<i>Antiques Roadshow</i>
7:00	3-1	<i>Born to Explore</i>
7:30	3-1	<i>Two for the Road</i>
8:00	3-1	<i>Art of Aging Well</i>
8:30	3-1	<i>Re/Flect: Successful Aging Defined</i>
9:00	3-1	<i>Growing Bolder</i>
9:30	3-1	<i>Second Opinion</i>
10:00	3-1	<i>Closer to Truth</i>
10:30	3-1	<i>Fishing Behind the Lines</i>
11:00	3-1	<i>Classical Stretch</i>
11:30	3-1	<i>Wai Lana Yoga</i>
12:00	3-1	<i>New Day New Chef</i>
12:30	3-1	<i>Taste of History</i>
1:00	3-1	<i>Book Makers</i>
2:00	3-1	<i>History Detectives</i>
3:00	3-1	<i>Antiques Roadshow</i>
4:00	3-1	<i>Consuelo Mack Wealthtrack</i>
4:30	3-1	<i>Start Up</i>
5:00	3-1	<i>Firing Line with Margaret Hoover</i>
5:30	3-1	<i>BBC World News America</i>
6:00	3-2	<b>PBS NewsHour</b>
	3-1	<i>PBS NewsHour</i>
7:00	3-2	<b>What to Eat When</b>
	3-1	<i>Ledisi Live: A Tribute to Nina Simone</i>
8:30	3-2	<b>Brain Revolution</b>
	3-1	<i>Great Performances</i>
		<i>"Lea Salonga in Concert"</i>
9:00	3-3	<i>Antiques Roadshow</i>
10:00	3-2	<b>Wilder Than Wild: Fire, Forests and the Future</b>
	3-1	<i>Amanpour and Company</i>
	3-3	<i>History Detectives</i>
11:00	3-2	<b>Amanpour and Company</b>
	3-1	<i>PBS Newshour</i>
	3-3	<i>Nature</i>
12:00	3-2	<b>PBS NewsHour</b>
	3-1	<i>Remember Pearl Harbor</i>
	3-3	<i>America's Heartland</i>

## Wednesday 2nd

5:00	3-1	<i>Classical Stretch</i>
5:30	3-1	<i>Wai Lana Yoga</i>
6:00	3-1	<i>Consuelo Mack Wealthtrack</i>
6:30	3-1	<i>Start Up</i>
7:00	3-1	<i>Curious Traveler</i>
7:30	3-1	<i>Burt Wolf: Travels &amp; Traditions</i>
8:00	3-1	<i>History Detectives</i>
9:00	3-1	<i>Around the Farm Table</i>
9:30	3-1	<i>Farmer and Foodie</i>
10:00	3-1	<i>American Woodshop</i>
10:30	3-1	<i>Woodsmith Shop</i>
11:00	3-1	<i>Classical Stretch</i>
11:30	3-1	<i>Sit and Be Fit</i>
12:00	3-1	<i>Sara's Weeknight Meals</i>
12:30	3-1	<i>Cook's Country</i>
1:00	3-1	<i>Chef's Life</i>
1:30	3-1	<i>Kitchen Queens: New Orleans</i>
2:00	3-1	<i>How to Cook Well at Christmas</i>
2:30	3-1	<i>Two for the Road</i>
3:00	3-1	<i>Tastemakers</i>
3:30	3-1	<i>Field Trip with Curtis Stone</i>

4:00	3-1	<i>Lidia's Kitchen</i>
4:30	3-1	<i>America's Test Kitchen</i>
5:00	3-1	<i>Story in the Public Square</i>
5:30	3-1	<i>BBC World News America</i>
6:00	3-1	<i>PBS NewsHour</i>
7:00	3-2	<b>John Denver: Country Roads – Live in England</b>
	3-1	<i>Ken Burns: Here &amp; There</i>
8:30	3-2	<b>Nova "Mysteries of Sleep"</b>
	3-1	<i>Master Your Future</i>
9:00	3-3	<i>Roadtrip Nation</i>
9:30	3-3	<i>Make48</i>
10:00	3-2	<b>Second Opinion "Hypothyroidism"</b>
	3-1	<i>Amanpour and Company</i>
	3-3	<i>Civilizations, Pt. 6</i>
10:30	3-2	<b>This Old House</b>
11:00	3-2	<b>Amanpour and Company</b>
	3-1	<i>PBS NewsHour</i>
	3-3	<i>Curious Traveler</i>
11:30	3-3	<i>Burt Wolf: Travel &amp; Traditions</i>
12:00	3-2	<b>PBS NewsHour</b>
	3-1	<i>Nova "Secrets of Forbidden City"</i>
	3-3	<i>In the Americas</i>

## Thursday 3rd

5:00	3-1	<i>Classical Stretch</i>
5:30	3-1	<i>Wai Lana Yoga</i>
6:00	3-1	<i>IQ: Smartparent</i>
6:30	3-1	<i>Travels with Darley</i>
7:00	3-1	<i>Family Travel with Colleen Kelly</i>
7:30	3-1	<i>RVers</i>
8:00	3-1	<i>Antiques Roadshow</i>
9:00	3-1	<i>Fons &amp; Porter's Love of Quilting</i>
9:30	3-1	<i>Quilt in a Day</i>
10:00	3-1	<i>Knit and Crochet Now</i>
10:30	3-1	<i>It's Sew Easy</i>
11:00	3-1	<i>Classical Stretch</i>

11:30	3-1	<i>Happy Yoga</i>
12:00	3-1	<i>Milk Street</i>
12:30	3-1	<i>Simply Ming</i>
1:00	3-1	<i>Lucky Chow</i>
1:30	3-1	<i>Les Stroud's Wild Harvest</i>
2:00	3-1	<i>Nature "The Cheetah Children"</i>
3:00	3-1	<i>Born to Explore</i>
3:30	3-1	<i>Changing Seas</i>
4:00	3-1	<i>Nova "Secrets of Forbidden City"</i>
5:00	3-1	<i>Innovations in Medicine</i>
5:30	3-1	<i>BBC World News America</i>
6:00	3-1	<i>PBS NewsHour</i>
7:00	3-2	<b>Joe Bonamassa: Royal Tea Live</b>
	3-1	<i>Dolly Parton: I Will Always Love You</i>
8:00	3-2	<b>Eric Clapton's Crossroads Guitar Festival</b>
8:30	3-1	<i>John Denver: Country Roads – Live from England</i>
9:00	3-3	<i>Born to Explore</i>
9:30	3-3	<i>Two for the Road</i>
10:00	3-2	<b>WoodSongs "Ukulele Night!"</b>
	3-1	<i>Amanpour and Company</i>
	3-3	<i>Nature</i>
11:00	3-2	<b>Amanpour and Company</b>
	3-1	<i>PBS NewsHour</i>
	3-3	<i>Nova</i>
12:00	3-2	<b>PBS NewsHour</b>
	3-1	<i>Chavis Chronicles</i>
	3-3	<i>Second Opinion</i>

## Friday 4th

5:00	3-1	<i>Classical Stretch</i>
5:30	3-1	<i>Yoga in Practice</i>
6:00	3-1	<i>America's Heartland</i>
6:30	3-1	<i>Growing a Greener World</i>
7:00	3-1	<i>Song of the Mountains</i>
8:00	3-1	<i>Sun Studio Sessions</i>

## KENW-TV on Cable Companies

We are pleased to announce that Plateau TV is now carrying all four channels of KENW-TV on its TV fiber optic service in many cities; for its service area, see [http://www.plateau.tv/service\\_area/](http://www.plateau.tv/service_area/). In the Portales area, Yucca Telecom also carries our four TV channels; the Yucca TV coverage area is at <https://yuccatelecom.com/tv/>.

KENW-TV's 3-1 (High Definition, HD) and 3-2 (Standard Definition, SD) program schedules can be seen on the following cable companies:

Alpine, TX: Channel 12 (SD) and Channel 712 (HD), TDS  
 Dexter: Channel 3 (SD) and Channel 470 (HD), Sparklight  
 Ft. Stanton, TX: Channel 6 (SD) and Channel 706 (HD), TDS  
 Hobbs: Channel 3 (SD) and Channel 703 (HD), TDS  
 Portales: Channel 3 (SD), and Channel 510 (HD), Comcast Cable  
 Roswell: Channel 3 (SD), and Channel 470 (HD), Sparklight

KENW-TV's 3-2 Schedule (Standard Definition, SD) can be seen on the following cable companies:

Artesia: Channel 3, PVT  
 Carlsbad: Channel 3, TDS  
 Clovis: Channel 3, Suddenlink  
 Dexter: Channel 3, PVT  
 Eddy County South: Channel 3, TDS  
 Eunice: Channel 3, TDS  
 Farwell: Channel 3, Suddenlink  
 Ft. Sumner: Channel 3, Reach Broadband  
 Hagerman: Channel 3, PVT  
 Jal: Channel 3, TDS  
 Lea County: Channel 3, TDS  
 Loving: Channel 3, TDS  
 Lovington: Channel 3, TDS  
 Melrose: Channel 9, Reach Broadband  
 Muleshoe, TX: Channel 5, Reach Broadband  
 Texico: Channel 3, Suddenlink  
 Tucumcari: Channel 11, Comcast

8:30 3-1 *Lost River Sessions*  
 9:00 3-1 *Woodsongs*  
 10:00 3-1 *Joy of Painting*  
 10:30 3-1 *Beauty of Oil Painting*  
 11:00 3-1 *Classical Stretch*  
 11:30 3-1 *Sit and Be Fit*  
 12:00 3-1 *This Old House Hour*  
 12:30 3-1 *Ask This Old House*  
 1:00 3-1 *Make It Artsy*  
 1:30 3-1 *Welcome to My Studio*  
 2:00 3-1 *Creative Living*  
 2:30 3-1 *Weekends with Yankee*  
 3:00 3-1 *Journeys in Japan*  
 3:30 3-1 *Dining with the Chef*  
 4:00 3-1 *DW In Good Shape: The Health Show*  
 4:30 3-1 *Gzero World with Ian Bremmer*  
 5:00 3-1 *Civil Disclosure*  
 5:30 3-1 *BBC World News America*  
 6:00 3-1 *PBS NewsHour*  
 7:00 3-2 **Market to Market**  
 3-1 *Brain Revolution*  
 7:30 3-2 **Consuelo Mack Wealthtrack**  
 8:00 3-2 **Washington Week**  
 8:30 3-2 **Peter, Paul & Mommy, Too**  
 3-1 *Nova "Mysteries of Sleep"*  
 9:00 3-3 *This Old House*  
 9:30 3-3 *Ask This Old House*  
 10:00 3-1 *Amanpour and Company*  
 3-3 *American Woodshop*  
 10:30 3-2 **Lifeline: Pearl Harbor's Unknown Hero**  
 3-3 *Woodsmith Shop*  
 11:00 3-1 *PBS NewsHour*  
 3-3 *Joy of Painting*  
 11:30 3-3 *Make It Artsy*  
 12:00 3-2 **PBS NewsHour**  
 3-1 *Thou Shalt Not Kill*  
 3-3 *Start Up*

### Saturday 5th

6:00 3-2 **Woodsmith Shop**  
 "Best Miter Saw Stand"  
 6:30 3-2 **Classic Woodworking** "End Table"  
 7:00 3-2 **Milk Street** "Entertaining Favorites"  
 7:30 3-2 **Cook's Country**  
 8:00 3-2 **America's Test Kitchen**  
 "Mediterranean Cooking"  
 8:30 3-2 **Great British Baking** "Masterclass 3"  
 9:30 3-2 **Motorweek**  
 10:00 3-2 **P. Allen Smith's Garden Home**  
 "Facts of Life"  
 10:30 3-2 **Garden Smart**  
 11:00 3-2 **Master Your Future**  
 3-1 *Lucy Worsley's 12 Days of Tudor Christmas*  
 12:30 3-2 **Quilt in a Day** "Harvest Star"  
 3-1 *This Old House*  
 1:00 3-2 **Quilting Arts** "Blow It Up"  
 3-1 *Ask This Old House*  
 1:30 3-2 **Fons & Porter's Love of Quilting**  
 3-1 *Motorweek*  
 2:00 3-2 **Creative Living**  
 3-1 *Ask This Old House*  
 2:30 3-2 **Jazzy Vegetarian**  
 "Two-Ingredient Recipes"  
 3-1 *Food Flirts*  
 3:00 3-2 **Knit and Crochet Now**  
 "Baby Blankets"  
 3-1 *America's Test Kitchen*  
 3:30 3-2 **This Old House**  
 "Anatomy of a Kitchen"  
 3-1 *Cook's Country*  
 4:00 3-2 **Ask This Old House**  
 "All About Windows"  
 3-1 *Nature "The Cheetah Children"*  
 4:30 3-2 **Welcome to My Studio** "Zinnias," Pt. 2  
 5:00 3-2 **Sewing with Nancy**  
 "Rectangles & Squares"  
 3-1 *PBS NewsHour Weekend*

5:30 3-2 **It's Sew Easy** "I've Got a Notion"  
 3-1 *Report from Santa Fe*  
 6:00 3-2 **Report from Santa Fe**  
 3-1 *Antiques Roadshow*  
 6:30 3-2 **America's Heartland**  
 7:00 3-2 **Lennon Sisters: Same Song, Separate Voices**  
 3-1 *Bee Gees: One Night Only*  
 8:30 3-2 **Stevie Nicks: 24 Karat Gold Tour**  
 3-1 *Josh Groban: An Evening of Harmony*  
 9:00 3-3 *Lawrence Welk Show*  
 10:00 3-2 **Nova** "Secrets of Forbidden City"  
 3-1 *Austin City Limits*  
 3-3 *Classic Gospel*  
 11:00 3-2 **Nature** "The Cheetah Children"  
 3-1 *Nova "Secrets of Forbidden City"*  
 3-3 *Woodsongs*  
 12:00 3-2 **Austin City Limits**  
 "Sharon Van Etten"  
 3-1 *Nature "The Cheetah Children"*  
 3-3 *Song of the Mountains*

### Sunday 6th

6:00 3-2 **Painting and Travel**  
 "Glacier National Park"  
 6:30 3-2 **Second Opinion** "Insomnia"  
 7:00 3-2 **Antiques Roadshow**  
 "Salt Lake City," Pt. 3  
 8:00 3-2 **Classic Gospel**  
 "Gaither Vocal Band"  
 9:00 3-2 **Joy of Music** "My Favorites II"  
 9:30 3-2 **Music and the Spoken Word**  
 10:00 3-2 **Civilizations** "The Cult Progress," Pt. 8  
 11:00 3-2 **Rick Steves' European Travel Tips and Tricks**  
 3-1 *Washington Week*  
 11:30 3-1 *What to Eat When*  
 12:30 3-2 **Brain Revolution**  
 1:30 3-1 *Market to Market*  
 2:00 3-2 **Lifeline: Pearl Harbor's Unknown Hero**  
 3-1 *P. Allen's Garden Home*  
 2:30 3-1 *J Schwanke's Life in Bloom*  
 3:00 3-1 *Great British Baking Show*  
 3:30 3-2 **Second Opinion** "Obsessive Compulsive Disorder"  
 4:00 3-2 **Classic Gospel** "Statler Brothers"  
 3-1 *Nova "Secrets of Forbidden City"*  
 5:00 3-2 **Start Up** "The Monarch – Ogden, UT"  
 3-1 *PBS Newshour Weekend*  
 5:30 3-2 **Ken Burns: Here & There**  
 3-1 *Stevie Nicks: 24 Karat Gold Tour*  
 7:00 3-2 **Josh Groban: An Evening of Harmony**  
 3-1 *Masterpiece "50 Fabulous Years!"*  
 8:30 3-2 **Ledisi Live: A Tribute to Nina Simone**  
 3-1 *Peter Dinklage: Around the World*  
 9:00 3-3 *Daytripper*  
 9:30 3-3 *America's Heartland*  
 10:00 3-2 **American Masters** "Miles Davis"  
 3-1 *BSO 360*  
 3-3 *This Old House*  
 10:30 3-1 *Remember Pearl Harbor*  
 3-3 *Ask This Old House*  
 11:00 3-3 *Motorweek*  
 11:30 3-3 *Texas Parks and Wildlife*  
 12:00 3-2 **Nova** "Secrets of Forbidden City"  
 3-1 *Call the Midwife Holiday Special 2018*  
 3-3 *Nature*

### Monday 7th

5:00 3-1 *Classical Stretch*  
 5:30 3-1 *Wai Lana Yoga*  
 6:00 3-1 *New Mexico in Focus*  
 7:00 3-1 *In the Americas with David Yetman*  
 7:30 3-1 *Joseph Rosendo's Travelscope*

8:00 3-1 *Rick Steve's Europe*  
 8:30 3-1 **Nick Stellino: Storyteller/the Kitchen**  
 9:00 3-1 *Pati's Mexican Table*  
 9:30 3-1 *Kevin Belton's New Orleans*  
 10:00 3-1 *P. Allen Smith's Garden Home*  
 10:30 3-1 *Jazzy Vegetarian*  
 11:00 3-1 *Classical Stretch*  
 11:30 3-1 *Sit and Be Fit*  
 12:00 3-1 *Great British Baking Show*  
 1:00 3-1 *Bee Gees One Night Only*  
 2:00 3-1 *Great Performances*  
 "Lea Salonga in Concert"  
 3:00 3-1 *Family Travel*  
 3:30 3-1 *RVers*  
 4:00 3-1 *America's Heartland*  
 4:30 3-1 *Daytripper*  
 5:00 3-1 *Texas Parks and Wildlife*  
 5:30 3-1 *BBC World News America*  
 6:00 3-1 *PBS NewsHour*  
 7:00 3-2 **Antiques Roadshow** "New Orleans"  
 3-1 *Lifeline: Pearl Harbor's Unknown Hero*

8:00 3-2 **Remember Pearl Harbor**  
 8:30 3-1 *Children's Crusade Revisited: Slaughterhouse 5 at 50*  
 9:00 3-1 *Antiques Roadshow*  
 3-3 *Great British Baking Show*  
 9:30 3-2 **Portillo Expedition: Mystery at Bougainville Island**  
 10:00 3-1 *Amanpour and Company*  
 3-3 *Call the Midwife Holiday Special, 2018*  
 11:00 3-2 **Antiques Roadshow** "New Orleans"  
 3-1 *PBS NewsHour*  
 11:30 3-3 *Call the Midwife Holiday Special 2019*  
 12:00 3-2 **PBS NewsHour**  
 3-1 *Independent Lens "Charm City"*

### Tuesday 8th

5:00 3-1 *Classical Stretch*  
 5:30 3-1 *Wai Lana Yoga*  
 6:00 3-1 *Antiques Roadshow*  
 7:00 3-1 *Born to Explore*  
 7:30 3-1 *Two for the Road*  
 8:00 3-1 *Sleep Deprived*  
 8:30 3-1 *Re'Flect: Successful Aging Defined*  
 9:00 3-1 *Growing Bolder*  
 9:30 3-1 *Second Opinion*  
 10:00 3-1 *Closer to Truth*  
 10:30 3-1 *Fishing Behind the Lines*  
 11:00 3-1 *Classical Stretch*  
 11:30 3-1 *Wai Lana Yoga*  
 12:00 3-1 *New Day New Chef*  
 12:30 3-1 *Taste of History*  
 1:00 3-1 *Rick Steves' European Travel Tips and Tricks*  
 2:00 3-1 *History Detectives*  
 3:00 3-1 *Antiques Roadshow*  
 4:00 3-1 *Consuelo Mack Wealthtrack*  
 4:30 3-1 *Start Up*  
 5:00 3-1 *Firing Line with Margaret Hoover*  
 5:30 3-1 *BBC World News America*  
 6:00 3-1 *PBS NewsHour*  
 7:00 3-2 **Ornament of the World**  
 3-1 *Reconstruction: America After the Civil War, Pt. 1*  
 9:00 3-2 **You Should Know**  
 3-1 *American Medevac*  
 3-3 *Antiques Roadshow*  
 9:30 3-2 **Creative Living**  
 10:00 3-2 **Frontline** "Growing Up Poor in America"  
 3-1 *Amanpour and Company*  
 3-3 *History Detectives*  
 11:00 3-2 **Amanpour and Company**  
 3-1 *PBS NewsHour*  
 3-3 *Nature*



- 12:00 3-2 PBS NewsHour**  
 3-1 *Frontline "Growing Up Poor in America"*  
 3-3 *America's Heartland*

### Wednesday 9th

- 5:00 3-1 *Classical Stretch*  
 5:30 3-1 *Wai Lana Yoga*  
 6:00 3-1 *Consuelo Mack Wealthtrack*  
 6:30 3-1 *Start Up*  
 7:00 3-1 *Curious Traveler*  
 7:30 3-1 *Burt Wolf: Travels & Traditions*  
 8:00 3-1 *History Detectives*  
 9:00 3-1 *Around the Farm Table*  
 9:30 3-1 *Farmer and the Foodie*  
 10:00 3-1 *American Woodshop*  
 10:30 3-1 *Woodsmith Shop*  
 11:00 3-1 *Classical Stretch*  
 11:30 3-1 *Sit and Be Fit*  
 12:00 3-1 *Sara's Weeknight Meals*  
 12:30 3-1 *Cook's Country*  
 1:00 3-1 *Food Flirts*  
 1:30 3-1 *Kitchen Queens: New Orleans*  
 2:00 3-1 *How to Cook Well at Christmas*  
 2:30 3-1 *Two for the Road*  
 3:00 3-1 *Tastemakers*  
 3:30 3-1 *Field Trip*  
 4:00 3-1 *Lidia's Kitchen*  
 4:30 3-1 *America's Test Kitchen*  
 5:00 3-1 *Story in the Public Square*  
 5:30 3-1 *BBC World News America*  
 6:00 3-1 *PBS NewsHour*  
**7:00 3-2 Nature** "Snow Bears"  
 3-1 *Ornament of the World*  
**8:00 3-2 Nova** "Bird Brain"  
**9:00 3-2 Nova** "Rise of the Rockets"  
 3-1 *Nature "Snow Bears"*  
 3-3 *Roadtrip Nation*  
 9:30 3-3 *Make48*  
**10:00 3-2 Second Opinion** "Insomnia"  
 3-1 *Amanpour and Company*  
 3-3 *Civilizations, Pt. 7*  
**10:30 3-2 This Old House** "Anatomy of a Kitchen"  
**11:00 3-2 Amanpour and Company**  
 3-1 *PBS NewsHour*  
 3-3 *Curious Traveler*  
 11:30 3-3 *Burt Wolf: Travels & Traditions*  
**12:00 3-2 PBS NewsHour**  
 3-1 *Nova "Bird Brain"*  
 3-3 *In the Americas*

### Thursday 10th

- 5:00 3-1 *Classical Stretch*  
 5:30 3-1 *Wai Lana Yoga*  
 6:00 3-1 *IQ: Smartparent*  
 6:30 3-1 *Travels with Darley*  
 7:00 3-1 *Family Travel*  
 7:30 3-1 *RVers*  
 8:00 3-1 *Antiques Roadshow*  
 9:00 3-1 *Fons & Porter's Love of Quilting*  
 9:30 3-1 *Quilt in a Day*  
 10:00 3-1 *Knit and Crochet Now*  
 10:30 3-1 *It's Sew Easy*  
 11:00 3-1 *Classical Stretch*  
 11:30 3-1 *Happy Yoga*  
 12:00 3-1 *Milk Street*  
 12:30 3-1 *Simply Ming*  
 1:00 3-1 *Lucky Chow*  
 1:30 3-1 *Les Stroud's Wild Harvest*  
 2:00 3-1 *Nature "Snow Bears"*  
 3:00 3-1 *Born to Explore*  
 3:30 3-1 *Changing Seas*  
 4:00 3-1 *Nova "Bird Brain"*  
 5:00 3-1 *Innovations in Medicine*  
 5:30 3-1 *BBC World News America*  
 6:00 3-1 *PBS NewsHour*

- 7:00 3-2 Frontline** "Growing Up Poor in America"  
 3-1 *Hank Locklin: Country Music's Timeless Tenor*  
**8:00 3-2 Flying J's White Mountain Christmas**  
 3-1 *Red Green Show*  
 8:30 3-1 *You Should Know*  
**9:00 3-2 Today's Wild West**  
 "Western Side of Denver"  
 3-1 *Creative Living*  
 3-3 *Born to Explore*  
**9:30 3-2 Red Green Show** "Good Old Hockey"  
 3-1 *European Christmas Markets*  
 3-3 *Two for the Road*  
**10:00 3-2 Hank Locklin: Country Music's Timeless Tenor**  
 3-1 *Amanpour and Company*  
 3-3 *Nature*  
**11:00 3-2 Amanpour and Company**  
 3-1 *PBS NewsHour*  
 3-3 *Nova*  
**12:00 3-2 PBS NewsHour**  
 3-1 *Chavis Chronicles*  
 3-3 *Second Opinion*

### Friday 11th

- 5:00 3-1 *Classical Stretch*  
 5:30 3-1 *Yoga in Practice*  
 6:00 3-1 *America's Heartland*  
 6:30 3-1 *Growing a Greener World*  
 7:00 3-1 *Song of the Mountains*  
 8:00 3-1 *Sun Studio Sessions*  
 8:30 3-1 *Lost River Sessions*  
 9:00 3-1 *Woodsongs*  
 10:00 3-1 *Joy of Painting*  
 10:30 3-1 *Beauty of Oil Painting*  
 11:00 3-1 *Classical Stretch*  
 11:30 3-1 *Sit and Be Fit*  
 12:00 3-1 *This Old House*  
 12:30 3-1 *Ask This Old House*  
 1:00 3-1 *Make It Artsy*  
 1:30 3-1 *Welcome to My Studio*  
 2:00 3-1 *Creative Living*  
 2:30 3-1 *Weekends with Yankee*  
 3:00 3-1 *Journeys in Japan*  
 3:30 3-1 *Dining with the Chef*  
 4:00 3-1 *DW In Good Shape: Health Show*  
 4:30 3-1 *Gzero World with Ian Bremmer*  
 5:00 3-1 *Civil Discourse*  
 5:30 3-1 *BBC World News America*  
 6:00 3-1 *PBS NewsHour*  
**7:00 3-2 Market to Market**  
 3-1 *Washington Week*  
**7:30 3-2 Consuelo Mack Wealthtrack**  
 3-1 *Firing Line with Margaret Hoover*  
**8:00 3-2 Washington Week**  
 3-1 *Nova "Bird Brain"*  
**8:30 3-2 Firing Line with Margaret Hoover**  
**9:00 3-2 Charlie Russell's Old West**  
 3-1 *Frontline "Growing Up Poor"*  
 3-3 *This Old House*  
 9:30 3-3 *Ask This Old House*  
**10:00 3-2 American Masters** "Lennon NYC"  
 3-1 *Amanpour and Company*  
 3-3 *American Woodshop*  
 10:30 3-3 *Woodsmith Shop*  
 11:00 3-1 *PBS NewsHour*  
 3-3 *Joy of Painting*  
 3-3 *Make It Artsy*  
**12:00 3-2 PBS NewsHour**  
 3-1 *Thou Shalt Not Kill*  
 3-3 *Start Up*

### Saturday 12th

- 6:00 3-2 Woodsmith Shop**  
 "Laid Back Bookrack"  
**6:30 3-2 Classic Woodworking**  
 "Tilt Top Table"  
**7:00 3-2 Milk Street** "Lasagna Bolognese"

- 7:30 3-2 Cook's Country**  
**8:00 3-2 America's Test Kitchen**  
 "Grilled Steak and Fruit Tart"  
**8:30 3-2 Great British Baking Show**  
 "Christmas Masterclass"  
**9:30 3-2 Motorweek**  
**10:00 3-2 ENMU Virtual Commencement Fall 2020**  
**11:00 3-2 Paint This with Jerry Yarnell**  
 "Nature's Fury," Pt. 1  
 3-1 *Kevin Belton's New Orleans*  
**11:30 3-2 Joy of Painting** "Deep Forest Falls"  
 3-1 *Pati's Mexican Table*  
**12:00 3-2 Beauty of Oil Painting**  
 "Peony Bouquet"  
 3-1 *This Old House*  
**12:30 3-2 Quilt in a Day**  
 "Sewing Quilt Top Together"  
 3-1 *This Old House*  
**1:00 3-2 Quilting Arts** "Pop It Up"  
 3-1 *Ask This Old House*  
**1:30 3-2 Fons & Porter's Love of Quilting**  
 "Forest & Flowers"  
 3-1 *Motorweek*  
**2:00 3-2 Creative Living**  
 3-1 *Ask This Old House*  
**2:30 3-2 Jazzy Vegetarian** "Main Dish Salads"  
 3-1 *Food Flirts*  
**3:00 3-2 Knit and Crochet Now**  
 "Mosaic Looking Hats"  
 3-1 *America's Test Kitchen*  
**3:30 3-2 This Old House** "Project Interrupted"  
 3-1 *Cook's Country*  
**4:00 3-2 Ask This Old House** "Water Features"  
 3-1 *Nature "Snow Bears"*  
**4:30 3-2 Welcome to My Studio**  
 "Dried Flowers," Pt. 1  
**5:00 3-2 Sewing with Nancy**  
 "Change Up Patchwork," Pt. 1  
 3-1 *PBS NewsHour Weekend*  
**5:30 3-2 It's Sew Easy** "Perfection"  
 3-1 *Report from Santa Fe*  
**6:00 3-2 Report from Santa Fe**  
 3-1 *Antiques Roadshow*  
**6:30 3-2 America's Heartland**  
**7:00 3-2 Lawrence Welk Show** "NY Show"  
 3-1 *Flying J's White Mountain Christmas*  
**8:00 3-2 Magic of Christmas in Alsace**  
**8:30 3-2 Red Green Show** "Splinter Lodge"  
 3-1 *Craft in America*  
**9:00 3-2 Austin City Limits** "Kane Brown/Colter Wall"  
 3-1 *Charlie Russell's Old West*  
 3-3 *Lawrence Welk Show*  
**10:00 3-2 Nova** "Bird Brain"  
 3-1 *Austin City Limits*  
 3-3 *Classic Gospel*  
**11:00 3-2 Nature** "Snow Bears"  
 3-1 *Nova "Bird Brain"*  
 3-3 *Woodsongs*  
**12:00 3-2 Austin City Limits**  
 3-1 *Nature "Snow Bears"*  
 3-3 *Song of the Mountains*

### Sunday 13th

- 6:00 3-2 Painting and Travel**  
 "Sod Roofed Cabin"  
**6:30 3-2 Second Opinion** "Drug Overdose"  
**7:00 3-2 Antiques Roadshow** "New Orleans"  
**8:00 3-2 Classic Gospel** "Joy in the Camp"  
**9:00 3-2 Joy of Music** "Christmas at Callaway Gardens"  
**9:30 3-2 Music and the Spoken Word**  
**10:00 3-2 Civilizations** "What is Art?," Pt. 9  
**11:00 3-2 New Mexico in Focus**  
 3-1 *Washington Week*  
 11:30 3-1 *New Mexico Colores*  
**12:00 3-2 New Mexico Colores**  
 3-1 *New Mexico in Focus*  
**12:30 3-2 RVers** "Conquering Alaska"

**1:00 3-2 Between the Covers**  
 "Lisa Unger, A Stranger Inside"  
 3-1 Consuelo Mack Wealthtrack

**1:30 3-2 Closer to Truth** "How Did the Universe Begin?"  
 3-1 Market to Market

**2:00 3-2 Scotland's Scenic Railways, Pt. 1**  
 3-1 P. Allen Smith's Garden Home

**2:30 3-2 J Schwanke's Life in Bloom**

**3:00 3-2 Medical Stories** "Finding Light in Darkness"  
 3-1 Great British Baking Show

**3:30 3-2 Second Opinion** "Hospital Delirium"

**4:00 3-2 Classic Gospel** "Gaither Vocal Band"  
 3-1 Nova "Bird Brain"

**5:00 3-2 Start Up** "Foodmaven – Denver, CO"  
 3-1 PBS Newshour Weekend

**5:30 3-2 Christmastime in New Orleans**  
 3-1 Laura Flanders Show

**6:00 3-2 Charlie Russell's Old West**  
 3-1 Masterpiece "Sanditon," Pt. 1

**7:00 3-2 Secret Cities** "Rome: St. Peter's"  
 3-1 Masterpiece "Sanditon," Pt. 2

**8:00 3-2 Masterpiece** "Miniaturist," Pt. 1  
 3-1 Masterpiece "Sanditon," Pt. 3

**9:00 3-2 Reconstruction: America After the Civil War, Pt. 1**  
 3-1 Masterpiece "Miniaturist," Pt. 1  
 3-3 Daytripper

**9:30 3-3 America's Heartland**

**10:00 3-1 Christmastime in New Orleans**  
 3-3 This Old House

**10:30 3-1 Portillo Expedition: Mystery at Bougainville Island**  
 3-3 Ask This Old House

**11:00 3-2 Evening with Harry Belafonte**  
 3-3 Motorweek

**11:30 3-3 Texas Parks and Wildlife**

**12:00 3-2 Nova** "Bird Brain"  
 3-1 Masterpiece "Sanditon," Pt. 1  
 3-3 Nature

### Monday 14th

**5:00 3-1 Classical Stretch**

**5:30 3-1 Wai Lana Yoga**

**6:00 3-1 New Mexico in Focus**

**7:00 3-1 In the Americas with David Yetman**

**7:30 3-1 Joseph Rosendo's Travelscope**

**8:00 3-1 Rick Steve's Europe**

**8:30 3-1 Nick Stellino: Storyteller in the Kitchen**

**9:00 3-1 Pati's Mexican Table**

**9:30 3-1 Kevin Belton's New Orleans**

**10:00 3-1 P. Allen Smith's Garden Home**

**10:30 3-1 Jazzy Vegetarian**

**11:00 3-1 Classical Stretch**

**11:30 3-1 Sit and Be Fit**

**12:00 3-1 Great British Baking Show**

**1:00 3-1 Masterpiece** "Sanditon," Pt. 1

**2:00 3-1 Masterpiece** "Sanditon," Pt. 2

**3:00 3-1 Masterpiece** "Sanditon," Pt. 3

**4:00 3-1 America's Heartland**

**4:30 3-1 Daytripper**

**5:00 3-1 Texas Parks and Wildlife**

**5:30 3-1 BBC World News America**

**6:00 3-1 PBS NewsHour**

**7:00 3-2 Antiques Roadshow** "New Orleans"  
 3-1 Secret Cities "Rome: St. Peter's"

**8:00 3-2 Christmas with the Tabernacle Choir** featuring Kelli O'Hara

**8:00 3-1 Scotland's Scenic Railways, Pt. 1**

**9:00 3-2 Scotland's Scenic Railways, Pt. 1**  
 3-1 Antiques Roadshow  
 3-3 Great British Baking Show

**10:00 3-2 Landscapes Through Time** "Van Gogh's at Saint Remy de Provence"  
 3-1 Amanpour and Company  
 3-3 Masterpiece "Sanditon," Pt. 1

**10:30 3-2 Rick Steves' Europe** "Egypt's Nile"

**11:00 3-2 Antiques Roadshow** "New Orleans"  
 3-1 PBS NewsHour  
 3-3 Masterpiece "Sanditon," Pt. 2

**12:00 3-2 PBS NewsHour**  
 3-1 Independent Lens "The Force"  
 3-3 Masterpiece "Sanditon," Pt. 3

### Tuesday 15th

**5:00 3-1 Classical Stretch**

**5:30 3-1 Wai Lana Yoga**

**6:00 3-1 Antiques Roadshow**

**7:00 3-1 Born to Explore**

**7:30 3-1 Two for the Road**

**8:00 3-1 Scotland's Scenic Railways, Pt. 1**

**9:00 3-1 Growing Bolder**

**9:30 3-1 Second Opinion**

**10:00 3-1 Closer to Truth**

**10:30 3-1 Fishing Behind the Lines**

**11:00 3-1 Classical Stretch**

**11:30 3-1 Wai Lana Yoga**

**12:00 3-1 New Day New Chef**

**12:30 3-1 Taste of History**

**1:00 3-1 Secret Cities** "Rome: St. Peter's"

**2:00 3-1 History Detectives**

**3:00 3-1 Antiques Roadshow**

**4:00 3-1 Consuelo Mack Wealthtrack**

**4:30 3-1 Start Up**

**5:00 3-1 Firing Line with Margaret Hoover**

**5:30 3-1 BBC World News America**

**6:00 3-1 PBS NewsHour**

**7:00 3-2 Ella Wishes You a Swinging Christmas**  
 3-1 Reconstruction: America After the Civil War, Pt. 2

**8:00 3-2 Christmas at Belmont**

**9:00 3-2 You Should Know**  
 3-1 Evening with Harry Belafonte  
 3-3 Antiques Roadshow

**9:30 3-2 Creative Living**

**10:00 3-2 Frontline** "I Am Not a Monster"  
 3-1 Amanpour and Company  
 3-3 History Detectives

**11:00 3-2 Amanpour and Company**  
 3-1 PBS NewsHour  
 3-3 Nature

**12:00 3-2 PBS NewsHour**  
 3-1 Frontline "I Am Not a Monster"  
 3-3 America's Heartland

### Wednesday 16th

**5:00 3-1 Classical Stretch**

**5:30 3-1 Wai Lana Yoga**

**6:00 3-1 Consuelo Mack Wealthtrack**

**6:30 3-1 Start Up**

**7:00 3-1 Curious Traveler**

**7:30 3-1 Burt Wolf: Travels & Traditions**

**8:00 3-1 History Detectives**

**9:00 3-1 Around the Farm Table**

**9:30 3-1 Farmer and the Foodie**

**10:00 3-1 American Woodshop**

**10:30 3-1 Woodsmith Shop**

**11:00 3-1 Classical Stretch**

**11:30 3-1 Sit and Be Fit**

**12:00 3-1 Sara's Weeknight Meals**

**12:30 3-1 Cook's Country**

**1:00 3-1 Food Flirts**

**1:30 3-1 Kitchen Queens: New Orleans**

**2:00 3-1 How to Cook Well at Christmas**

**2:30 3-1 Two for the Road**

**3:00 3-1 Tastemakers**

**3:30 3-1 Field Trip**

**4:00 3-1 Lidia's Kitchen**

**4:30 3-1 America's Test Kitchen**

**5:00 3-1 Story in the Public Square**

**5:30 3-1 BBC World News America**

**6:00 3-1 PBS NewsHour**

**7:00 3-2 Nature** "Animal Odd Couples"  
 3-1 American Masters "Miles Davis"

**8:00 3-2 Nova** "Einstein's Quantum Riddle"

**9:00 3-2 Nova** "Apollo's Daring Mission"  
 3-1 Nature "Animal Odd Couples"  
 3-3 Roadtrip Nation

**9:30 3-3 Make48**

**10:00 3-2 Second Opinion** "Drug Overdose"  
 3-1 Amanpour and Company  
 3-3 Civilizations, Pt. 8

**10:30 3-2 This Old House** "Project Interrupted"

**11:00 3-2 Amanpour and Company**  
 3-1 PBS NewsHour  
 3-3 Curious Traveler

**11:30 3-3 Burt Wolf: Travels & Traditions**

**12:00 3-2 PBS NewsHour**  
 3-1 Nova "Einstein's Quantum Riddle"  
 3-3 In the Americas

### Thursday 17th

**5:00 3-1 Classical Stretch**

**5:30 3-1 Wai Lana Yoga**

**6:00 3-1 IQ: Smartparent**

**6:30 3-1 Travels with Darley**

**7:00 3-1 Family Travel**

**7:30 3-1 RVers**

**8:00 3-1 Antiques Roadshow**

**9:00 3-1 Fons & Porter's Love of Quilting**

**9:30 3-1 Quilt in a Day**

**10:00 3-1 Knit and Crochet Now**

**10:30 3-1 It's Sew Easy**

**11:00 3-1 Classical Stretch**

**11:30 3-1 Happy Yoga**

**12:00 3-1 Milk Street**

**12:30 3-1 Simply Ming**

**1:00 3-1 Lucky Chow**

**1:30 3-1 Les Stroud's Wild Harvest**

**2:00 3-1 Nature** "Animal Odd Couples"

**3:00 3-1 Born to Explore**

**3:30 3-1 Changing Seas**

**4:00 3-1 Nova** "Einstein's Quantum Riddle"

**5:00 3-1 Innovations in Medicine**

**5:30 3-1 BBC World News America**

**6:00 3-1 PBS NewsHour**

**7:00 3-2 Frontline** "I Am Not a Monster"  
 3-1 Christmas at Belmont

**8:00 3-2 Song of the Mountains** "Hillary Klug"  
 3-1 Red Green Show

**8:30 3-1 You Should Know**

**9:00 3-2 Today's Wild West** "The Miles City Bucking Horse Sale"  
 3-1 Creative Living  
 3-3 Born to Explore

**9:30 3-2 Red Green Show** "Outside"  
 3-1 Christmas on the Danube  
 3-3 Two for the Road

**10:00 3-2 Woodsongs** "Abby the Spoon Lady"  
 3-1 Amanpour and Company  
 3-3 Nature

**11:00 3-2 Amanpour and Company**  
 3-1 PBS NewsHour  
 3-3 Nova

**12:00 3-2 PBS NewsHour**  
 3-1 Chavis Chronicles  
 3-3 Second Opinion

### Friday 18th

**5:00 3-1 Classical Stretch**

**5:30 3-1 Yoga in Practice**

**6:00 3-1 America's Heartland**

**6:30 3-1 Growing A Greener World**

**7:00 3-1 Song of the Mountains**

**8:00 3-1 Sun Studio Sessions**

**8:30 3-1 Lost River Sessions**

**9:00 3-1 Woodsongs**

**10:00 3-1 Joy of Painting**

**10:30 3-1 Beauty of Oil Painting**

**11:00 3-1 Classical Stretch**

**11:30 3-1 Sit and Be Fit**

**12:00 3-1 This Old House**

**12:30 3-1 Ask This Old House**

**1:00 3-1 Make It Artsy**



1:30 3-1 *Welcome to My Studio*  
 2:00 3-1 *Creative Living*  
 2:30 3-1 *Weekends with Yankee*  
 3:00 3-1 *Journeys in Japan*  
 3:30 3-1 *Dining with the Chef*  
 4:00 3-1 *DW In Good Shape: Health Show*  
 4:30 3-1 *Gzero World with Ian Bremmer*  
 5:00 3-1 *Civil Discourse*  
 5:30 3-1 *BBC World News America*  
 6:00 3-1 *PBS NewsHour*  
 7:00 3-2 **Market to Market**  
 3-1 *Washington Week*  
 7:30 3-2 **Consuelo Mack Wealthtrack**  
 3-1 *Firing Line with Margaret Hoover*  
 8:00 3-2 **Washington Week**  
 3-1 *Nova "Einstein's Quantum Riddle"*  
 8:30 3-2 **Firing Line with Margaret Hoover**  
 9:00 3-2 **Ella Wishes You a Swinging Christmas**  
 3-1 *Frontline "I Am Not a Monster"*  
 3-3 *This Old House Hour*  
 9:30 3-3 *Ask This Old House*  
 10:00 3-2 **Masterpiece** "Miniaturist," Pt. 1  
 3-1 *Amanpour and Company*  
 3-3 *American Woodshop*  
 10:30 3-3 *Woodsmith Shop*  
 11:00 3-2 **Secrets of Royal Travel** "Train," Pt. 1  
 3-1 *PBS NewsHour*  
 3-3 *Joy of Painting*  
 11:30 3-3 *Make It Artsy*  
 12:00 3-2 **PBS Newshour**  
 3-1 *Thou Shalt Not Kill*  
 3-3 *Start Up*

### Saturday 19th

6:00 3-2 **Wood smith Shop** "Candle Projects"  
 6:30 3-2 **Classic Woodworking** "Table Lamp"  
 7:00 3-2 **Milk Street** "French Showstopper Desserts"  
 7:30 3-2 **Cook's Country**  
 8:00 3-2 **America's Test Kitchen**  
 "Spicing up the Grill"  
 8:30 3-2 **Great British Baking Show** "Cake"  
 9:30 3-2 **Motorweek**  
 10:00 3-2 **P. Allen Smith's Garden Home**  
 "Handcrafted"  
 10:30 3-2 **Garden Smart**  
 11:00 3-2 **Paint This with Jerry Yarnell**  
 "Nature's Fury, Unleashed," Pt. 2  
 3-1 *Kevin Belton's New Orleans*  
 11:30 3-2 **Joy of Painting** "Winter's Grace"  
 3-1 *Pati's Mexican Table*  
 12:00 3-2 **Beauty of Oil Painting** "Swan"  
 3-1 *This Old House*  
 12:30 3-2 **Quilt in a Day** "All Star Quilts"  
 3-1 *This Old House*  
 1:00 3-2 **Quilting Arts** "Tech-nique"  
 3-1 *Ask This Old House*  
 1:30 3-2 **Fons & Porter's Love of Quilting**  
 "Corinthian Stars"  
 3-1 *Motorweek*  
 2:00 3-2 **Creative Living**  
 3-1 *Ask This Old House*  
 2:30 3-2 **Jazzy Vegetarian**  
 "Dairy-Free Desserts"  
 3-1 *Food Flirts*  
 3:00 3-2 **Knit and Crochet Now** "Hygge Feet"  
 3-1 *America's Test Kitchen*  
 3:30 3-2 **This Old House** "New Light in Old Windows"  
 3-1 *Cook's Country*  
 4:00 3-2 **Ask This Old House** "Fireplaces"  
 3-1 *Nature "Animal Odd Couples"*  
 4:30 3-2 **Welcome to My Studio**  
 "Dried Flowers," Pt. 2  
 5:00 3-2 **Sewing with Nancy** "Change Up Patchwork"  
 3-1 *PBS NewsHour Weekend*  
 5:30 3-2 **It's Sew Easy** "Trends"  
 3-1 *Report from Santa Fe*

6:00 3-2 **Report from Santa Fe**  
 3-1 *Antiques Roadshow*  
 6:30 3-2 **America's Heartland**  
 7:00 3-2 **Lawrence Welk Show** "Christmas"  
 3-1 *Ella Wishes You a Swinging Christmas*  
 8:00 3-2 **Christmastime in New Orleans**  
 3-1 *Christmas with the Tabernacle Choir featuring Kelli O'Hara and Richard Thomas*  
 8:30 3-2 **Red Green Show** "Good Old Hockey"  
 9:00 3-2 **Austin City Limits**  
 "Khalid/Mac Demarco"  
 3-1 *Cultivating the Wild*  
 3-3 *Lawrence Welk Show*  
 10:00 3-2 **Nova** "Einstein's Quantum Riddle"  
 3-1 *Austin City Limits*  
 3-3 *Classic Gospel*  
 11:00 3-2 **Nature** "Animal Odd Couples"  
 3-1 *Nova "Einstein's Quantum Riddle"*  
 3-3 *Woodsongs*  
 12:00 3-2 **Austin City Limits**  
 "Khalid/Mac Demarco"  
 3-1 *Nature "Animal Odd Couples"*  
 3-3 *Song of the Mountains*

### Sunday 20th

6:00 3-2 **Painting and Travel** "Steam Tractor"  
 6:30 3-2 **Second Opinion**  
 "Head & Neck Cancer"  
 7:00 3-2 **Antiques Roadshow** "New Orleans"  
 8:00 3-2 **Classic Gospel** "Best of Ivan Parker"  
 9:00 3-2 **Joy of Music** "Christmas on the Rhine River"  
 9:30 3-2 **Music and the Spoken Word**  
 10:00 3-2 **Secret Cities** "Rome: St. Peter's"  
 11:00 3-2 **New Mexico in Focus**  
 3-1 *Washington Week*  
 11:30 3-1 *Cultura*  
 12:00 3-2 **Cultura**  
 3-1 *New Mexico in Focus*  
 12:30 3-2 **RVers**  
 1:00 3-2 **Between the Covers**  
 "Nelson & Alex DeMille, *The Deserter*"  
 3-1 *Consuelo Mack Wealthtrack*  
 1:30 3-2 **Closer to Truth** "Is the Universe Theologically Ambiguous?"  
 3-1 *Market to Market*  
 2:00 3-2 **Scotland's Scenic Railways**, Pt. 2  
 3-1 *P. Allen Smith's Garden Home*  
 2:30 3-1 *J. Schwanke's Life in Bloom*  
 3:00 3-2 **Medical Stories** "Unfinished Portraits"  
 3-1 *Great British Baking Show*  
 3:30 3-2 **Second Opinion**  
 "Transgender Health"  
 4:00 3-2 **Classic Gospel** "A Billy Graham Music Homecoming"  
 3-1 *Nova "Einstein's Quantum Riddle"*  
 5:00 3-2 **Start Up** "Oswald Service and Repair"  
 3-1 *PBS NewsHour Weekend*  
 5:30 3-2 **Magic of Christmas in Alsace**  
 3-1 *Laura Flanders Show*  
 6:00 3-2 **Awakening in Taos: The Mabel Dodge Luhan Story**  
 3-1 *Masterpiece "Sanditon," Pt. 4*  
 7:00 3-2 **Secret Cities** "Paris: Sacré Coeur Basilica"  
 3-1 *Masterpiece "Sanditon," Pt. 5*  
 8:00 3-2 **Masterpiece** "Miniaturist," Pt. 2  
 3-1 *Masterpiece "Sanditon," Pt. 6*  
 9:00 3-2 **Reconstruction: America After the Civil War**, Pt. 2  
 3-1 *Masterpiece "Miniaturist," Pt. 2*  
 3-3 *Daytripper*  
 9:30 3-3 *America's Heartland*  
 10:00 3-1 *American Experience*  
 "Into the Amazon"  
 3-3 *This Old House*  
 10:30 3-3 *Ask This Old House*

11:00 3-2 **Evening with Dionne Warwick**  
 3-3 *Motorweek*  
 11:30 3-3 *Texas Parks and Wildlife*  
 12:00 3-2 **Nova** "Einstein's Quantum Riddle"  
 3-1 *Masterpiece "Sanditon," Pt. 4*  
 3-3 *Nature*

### Monday 21st

5:00 3-1 *Classical Stretch*  
 5:30 3-1 *Wai Lana Yoga*  
 6:00 3-1 *New Mexico in Focus*  
 7:00 3-1 *In the Americas with David Yetman*  
 7:30 3-1 *Joseph Rosendo's Travelscope*  
 8:00 3-1 *Rick Steve's Europe*  
 8:30 3-1 *Nick: Stellino: Storyteller in the Kitchen*  
 9:00 3-1 *Pati's Mexican Table*  
 9:30 3-1 *Kevin Belton's New Orleans*  
 10:00 3-1 *P. Allen Smith's Garden Home*  
 10:30 3-1 *Jazzy Vegetarian*  
 11:00 3-1 *Classical Stretch*  
 11:30 3-1 *Sit and Be Fit*  
 12:00 3-1 *Great British Baking Show*  
 1:00 3-1 *Masterpiece "Sanditon," Pt. 4*  
 2:00 3-1 *Masterpiece "Sanditon," Pt. 5*  
 3:00 3-1 *Masterpiece "Sanditon," Pt. 6*  
 4:00 3-1 *America's Heartland*  
 4:30 3-1 *Daytripper*  
 5:00 3-1 *Texas Parks and Wildlife*  
 5:30 3-1 *BBC World News America*  
 6:00 3-1 *PBS NewsHour*  
 7:00 3-2 **Antiques Roadshow** "Orlando"  
 3-1 *Secret Cities "Paris: Sacré Coeur Basilica"*  
 8:00 3-2 **Flying J's White Mountain Christmas**  
 3-1 *Scotland's Scenic Railways*, Pt. 2  
 9:00 3-2 **Scotland's Scenic Railways**, Pt. 2  
 3-1 *Flying J's White Mountain Christmas*  
 3-3 *Great British Baking Show*  
 10:00 3-2 **Landscapes Through Time**  
 "Monet's Waterlilies"  
 3-1 *Amanpour and Company*  
 3-3 *Masterpiece "Sanditon," Pt. 4*  
 10:30 3-2 **Rick Steves' Europe** "Ethiopia"  
 11:00 3-2 **Antiques Roadshow** "Orlando"  
 3-1 *PBS NewsHour*  
 3-3 *Masterpiece "Sanditon," Pt. 5*  
 12:00 3-2 **PBS NewsHour**  
 3-1 *Independent Lens "Rumble: The Indians Who Rocked the World"*  
 3-3 *Masterpiece "Sanditon," Pt. 6*

### Tuesday 22nd

5:00 3-1 *Classical Stretch*  
 5:30 3-1 *Wai Lana Yoga*  
 6:00 3-1 *Antiques Roadshow*  
 7:00 3-1 *Born to Explore*  
 7:30 3-1 *Two for the Road*  
 8:00 3-1 *Scotland's Scenic Railways*, Pt. 2  
 9:00 3-1 *Growing Bolder*  
 9:30 3-1 *Second Opinion*  
 10:00 3-1 *Closer to Truth*  
 10:30 3-1 *Fishing Behind the Lines*  
 11:00 3-1 *Classical Stretch*  
 11:30 3-1 *Wai Lana Yoga*  
 12:00 3-1 *New Day New Chef*  
 12:30 3-1 *Taste of History*  
 1:00 3-1 *Secret Cities "Paris: Sacré Coeur"*  
 2:00 3-1 *History Detectives*  
 3:00 3-1 *Antiques Roadshow*  
 4:00 3-1 *Consuelo Mack Wealthtrack*  
 4:30 3-1 *Start Up*  
 5:00 3-1 *Firing Line with Margaret Hoover*  
 5:30 3-1 *BBC World News America*  
 6:00 3-1 *PBS NewsHour*  
 7:00 3-2 **American Experience**  
 "Into the Amazon"  
 3-1 *American Experience*  
 "Surviving the Dust Bowl"  
 8:00 3-1 *Charlie Russell's Old West*

**9:00 3-2 You Should Know**  
 3-1 *Evening with Dionne Warwick*  
 3-3 *Antiques Roadshow*  
**9:30 3-2 Creative Living**  
**10:00 3-2 Awakening in Taos: The Mabel Dodge Luhan Story**  
 3-1 *Amanpour and Company*  
 3-3 *History Detectives*  
**11:00 3-2 Amanpour and Company**  
 3-1 *PBS NewsHour*  
 3-3 *Nature*  
**12:00 3-2 PBS NewsHour**  
 3-1 *Frontline "Covid Diaries"*  
 3-3 *America's Heartland*

### Wednesday 23rd

5:00 3-1 *Classical Stretch*  
 5:30 3-1 *Wai Lana Yoga*  
 6:00 3-1 *Consuelo Mack Wealthtrack*  
 6:30 3-1 *Start Up*  
 7:00 3-1 *Curious Traveler*  
 7:30 3-1 *Burt Wolf: Travels & Traditions*  
 8:00 3-1 *History Detectives*  
 9:00 3-1 *Around the Farm Table*  
 9:30 3-1 *Farmer and the Foodie*  
 10:00 3-1 *American Woodshop*  
 10:30 3-1 *Woodsmith Shop*  
 11:00 3-1 *Classical Stretch*  
 11:30 3-1 *Sit and Be Fit*  
 12:00 3-1 *Sara's Weeknight Meals*  
 12:30 3-1 *Cook's Country*  
 1:00 3-1 *Food Flirts*  
 1:30 3-1 *Kitchen Queens: New Orleans*  
 2:00 3-1 *Magic of Christmas in Alsace*  
 2:30 3-1 *Two for the Road*  
 3:00 3-1 *Tastemakers*  
 3:30 3-1 *Field Trip*  
 4:00 3-1 *Lidia's Kitchen*  
 4:30 3-1 *America's Test Kitchen*  
 5:00 3-1 *Story in the Public Square*  
 5:30 3-1 *BBC World News America*  
 6:00 3-1 *PBS NewsHour*  
**7:00 3-2 Nature "Snowbound: Animals of Winter"**  
 3-1 *American Masters "Lennon NYC"*  
**8:00 3-2 Nova "Pluto and Beyond"**  
**9:00 3-2 Nova "Flying Supersonic"**  
 3-1 *Nature "Snowbound: Animals of Winter"*  
 3-3 *Roadtrip Nation*  
 9:30 3-3 *Make48*  
**10:00 3-2 Second Opinion**  
 "Head & Neck Cancer"  
 3-1 *Amanpour and Company*  
 3-3 *Civilizations, Pt. 9*  
**10:30 3-2 This Old House "New Light in Old Windows"**  
**11:00 3-2 Amanpour and Company**  
 3-1 *PBS NewsHour*  
 3-3 *Curious Traveler*  
 11:30 3-3 *Burt Wolf: Travels & Traditions*  
**12:00 3-2 PBS NewsHour**  
 3-1 *City Hall*  
 3-3 *In the Americas*

### Thursday 24th

5:00 3-1 *Classical Stretch*  
 5:30 3-1 *Wai Lana Yoga*  
 6:00 3-1 *IQ: Smartparent*  
 6:30 3-1 *Travels with Darley*  
 7:00 3-1 *Family Travel*  
 7:30 3-1 *RVers*  
 8:00 3-1 *Antiques Roadshow*  
 9:00 3-1 *Fons & Porter's Love of Quilting*  
 9:30 3-1 *Quilt in a Day*  
 10:00 3-1 *Knit and Crochet Now*  
 10:30 3-1 *It's Sew Easy*  
 11:00 3-1 *Classical Stretch*  
 11:30 3-1 *Happy Yoga*

12:00 3-1 *Milk Street*  
 12:30 3-1 *Simply Ming*  
 1:00 3-1 *Lucky Chow*  
 1:30 3-1 *Les Stroud's Wild Harvest*  
 2:00 3-1 *Nature "Snowbound: Animals/Winter"*  
 3:00 3-1 *Born to Explore*  
 3:30 3-1 *Changing Seas*  
 4:00 3-1 *Nova "Pluto and Beyond"*  
 5:00 3-1 *Innovations in Medicine*  
 5:30 3-1 *BBC World News America*  
 6:00 3-1 *PBS NewsHour*  
**7:00 3-2 All Is Calm: The Christmas Truce of 1914**  
 3-1 *St. Olaf Christmas Festival*  
 8:00 3-1 *Magic of Christmas in Alsace*  
**8:30 3-2 Christmas with the Tabernacle Choir featuring Kelli O'Hara and Richard Thomas**  
 3-1 *All is Calm: The Christmas Truce of 1914*  
 9:00 3-3 *Born to Explore*  
**9:30 3-2 St. Olaf Christmas Festival**  
 3-3 *Two for the Road*  
 10:00 3-1 *Amanpour and Company*  
 3-3 *Nature*  
**10:30 3-2 Christmastime in New Orleans**  
**11:00 3-2 Amanpour and Company**  
 3-1 *PBS NewsHour*  
 3-3 *Nova*  
**12:00 3-2 PBS NewsHour**  
 3-1 *Chavis Chronicles*  
 3-3 *Second Opinion*

### Friday 25th

5:00 3-1 *Classical Stretch*  
 5:30 3-1 *Yoga in Practice*  
 6:00 3-1 *America's Heartland*  
 6:30 3-1 *Growing a Greener World*  
 7:00 3-1 *Song of the Mountains*  
 8:00 3-1 *Sun Studio Sessions*  
 8:30 3-1 *Lost River Sessions*  
 9:00 3-1 *Woodsongs*  
 10:00 3-1 *Joy of Painting*  
 10:30 3-1 *Beauty of Oil Painting*  
 11:00 3-1 *Classical Stretch*  
 11:30 3-1 *Sit and Be Fit*  
 12:00 3-1 *This Old House*  
 12:30 3-1 *Ask This Old House*  
 1:00 3-1 *Make It Artsy*  
 1:30 3-1 *Welcome to My Studio*  
 2:00 3-1 *Creative Living*  
 2:30 3-1 *Weekends with Yankee*  
 3:00 3-1 *Journeys in Japan*  
 3:30 3-1 *Dining with the Chef*  
 4:00 3-1 *DW In Good Shape: Health Show*  
 4:30 3-1 *Gzero World with Ian Bremmer*  
 5:00 3-1 *Civil Disclosure*  
 5:30 3-1 *BBC World News America*  
 6:00 3-1 *PBS NewsHour*  
**7:00 3-2 Market to Market**  
 3-1 *Washington Week*  
**7:30 3-2 Consuelo Mack Wealthtrack**  
 3-1 *Firing Line with Margaret Hoover*  
**8:00 3-2 Washington Week**  
 3-1 *Nova "Pluto and Beyond"*  
**8:30 3-2 Firing Line with Margaret Hoover**  
**9:00 3-2 Call the Midwife Holiday Special**  
 3-1 *Farmers for America*  
 3-3 *This Old House*  
 9:30 3-3 *Ask This Old House*  
 10:00 3-1 *Amanpour and Company*  
 3-3 *American Woodshop*  
**10:30 3-2 Masterpiece "Miniaturist, Pt. 2"**  
 3-3 *Woodsmith Shop*  
 11:00 3-1 *PBS NewsHour*  
 3-3 *Joy of Painting*  
**11:30 3-2 Secrets of Royal Travel "Flight," Pt. 2**  
 3-3 *Make It Artsy*  
 12:00 3-1 *Thou Shalt Not Kill*  
 3-3 *Start Up*

### Saturday 26th

**6:00 3-2 Wood smith Shop "Take Care of Your Tools"**  
**6:30 3-2 Classic Woodworking**  
 "Hanging Tool Cabinet"  
**7:00 3-2 Milk Street "Weeknight Mexican"**  
**7:30 3-2 Cook's Country**  
**8:00 3-2 America's Test Kitchen**  
 "Pork Chops and Corn Fritters"  
**8:30 3-2 Great British Baking Show**  
 "Masterclass 4"  
**9:30 3-2 Motorweek**  
**10:00 3-2 P. Allen Smith's Garden Home**  
**10:30 3-2 Garden Smart**  
**11:00 3-2 Paint This with Jerry Yarnell**  
 "Nature's Fury Unleashed"  
 3-1 *Kevin Belton's New Orleans*  
**11:30 3-2 Joy of Painting**  
 "Splendor of Autumn"  
 3-1 *Pati's Mexican Table*  
**12:00 3-2 Beauty of Painting "Nesting"**  
 3-1 *This Old House*  
**12:30 3-2 Quilt in a Day "All Star Quilts"**  
 3-1 *This Old House*  
**1:00 3-2 Quilting Arts "Embellish"**  
 3-1 *Ask This Old House*  
**1:30 3-2 Fons & Porter's Love of Quilting**  
 "Ready, Set, Stitch!"  
 3-1 *Motorweek*  
**2:00 3-2 Creative Living**  
 3-1 *Ask This Old House*  
**2:30 3-2 Jazzy Vegetarian "Vegan Holiday"**  
 3-1 *Food Flirts*  
**3:00 3-2 Knit and Crochet Now**  
 "Holiday Stockings"  
 3-1 *America's Test Kitchen*  
**3:30 3-2 This Old House "Chimney Straightener"**  
 3-1 *Cook's Country*  
**4:00 3-2 Ask This Old House "Happy Holidays from AsktoH!"**  
 3-1 *Nature "Snowbound: Animals/Winter"*  
**4:30 3-2 Welcome to My Studio "Roses," Pt. 1**  
**5:00 3-2 Sewing with Nancy**  
 "Change Up Patchwork"  
 3-1 *PBS NewsHour Weekend*  
**5:30 3-2 It's Sew Easy "Material Girls"**  
 3-1 *Report from Santa Fe*  
**6:00 3-2 Report from Santa Fe**  
 3-1 *Antiques Roadshow*  
**6:30 3-2 America's Heartland**  
**7:00 3-2 Lawrence Welk Show "New Years"**  
 3-1 *Violin Alone*  
**8:00 3-2 Travel Detective "Hidden Gems of Dominican Republic"**  
 3-1 *Call the Midwife Holiday Special*  
**8:30 3-2 Red Green Show "Outside"**  
**9:00 3-2 Austin City Limits "Gary Clark, Jr."**  
 3-3 *Lawrence Welk Show*  
 9:30 3-1 *Design in Mind: On Location*  
**10:00 3-2 Nova "Pluto and Beyond"**  
 3-1 *Austin City Limits*  
 3-3 *Classic Gospel*  
**11:00 3-2 Nature "Snowbound: Animals/Winter"**  
 3-1 *Nova "Pluto and Beyond"*  
 3-3 *Woodsongs*  
**12:00 3-2 Austin City Limits "Gary Clark, Jr."**  
 3-1 *Nature "Snowbound: Animals/Winter"*  
 3-3 *Song of the Mountains*

### Sunday 27th

**6:00 3-2 Painting and Travel "Button Factory"**  
**6:30 3-2 Second Opinion "Type I Diabetes"**  
**7:00 3-2 Antiques Roadshow "Orlando"**  
**8:00 3-2 Classic Gospel "Gospel Music of Johnny Cash"**  
**9:00 3-2 Joy of Music**  
**9:30 3-2 Music and the Spoken Word**



**10:00 3-2 Secret Cities** "Paris: Sacré Coeur" "

**11:00 3-2 New Mexico in Focus**  
3-1 *Washington Week*

11:30 3-1 *New Mexico Colores*

**12:00 3-2 New Mexico Colores**  
3-1 *New Mexico in Focus*

**12:30 3-2 RVerS**  
**1:00 3-2 Between the Covers**  
"Talia Carner, *The Third Daughter*"  
3-1 *Consuelo Mack Wealthtrack*

**1:30 3-2 Closer to Truth** "Science and the Future of Humanity"  
3-1 *Market to Market*

**2:00 3-2 Scotland's Scenic Railways, Pt. 3**  
3-1 *P. Allen Smith's Garden Home*

2:30 3-1 *J. Schwanke's Life in Bloom*

**3:00 3-2 Medical Stories** "Finding Normal in an Electrical Storm"  
3-1 *Great British Baking Show*

**3:30 3-2 Second Opinion** "Atrial Fibrillation"

**4:00 3-2 Classic Gospel** "All Day Singin' at the Dome"  
3-1 *Nova "Pluto and Beyond"*

**5:00 3-2 Start Up** "Stitch People – Salt Lake City, UT"  
3-1 *PBS Newshour*

**5:30 3-2 Unlikely Friendship**  
3-1 *Laura Flanders Show*

**6:00 3-2 Georgia O'Keeffe: A Woman on Paper**  
3-1 *Masterpiece "Sanditon," Pt. 7*

**6:30 3-2 Call the Midwife Holiday Special 2020**  
7:00 3-1 *Masterpiece "Sanditon," Pt. 8*

**8:00 3-2 Masterpiece** "Miniaturist," Pt. 3  
3-1 *Lucy Worsley's 12 Days of Tudor Christmas*

**9:00 3-2 Ornament of the World**  
3-1 *Masterpiece "Miniaturist," Pt. 3*  
3-3 *Daytripper*

9:30 3-3 *America's Heartland*

10:00 3-1 *American Experience*  
"Greely Expedition"  
3-3 *This Old House*

10:30 3-3 *Ask This Old House*

**11:00 3-2 Evening with B. B. King**  
3-1 *Wilder Than Wild: Fires, Forests and the Future*  
3-3 *Motorweek*

11:30 3-3 *Texas Parks and Wildlife*

**12:00 3-2 Nova** "Pluto and Beyond"  
3-1 *Masterpiece "Sanditon," Pt. 7*  
3-3 *Nature*

### Monday 28th

5:00 3-1 *Classical Stretch*  
5:30 3-1 *Wai Lana Yoga*  
6:00 3-1 *New Mexico in Focus*  
7:00 3-1 *In the Americas with David Yetman*  
7:30 3-1 *Joseph Rosendo's Travelscope*  
8:00 3-1 *Rick Steve's Europe*  
8:30 3-1 *Nick Stellino: Storyteller in Kitchen*  
9:00 3-1 *Pati's Mexican Table*  
9:30 3-1 *Kevin Belton's New Orleans*  
10:00 3-1 *P. Allen Smith's Garden Home*  
10:30 3-1 *Jazzy Vegetarian*  
11:00 3-1 *Classical Stretch*  
11:30 3-1 *Sit and Be Fit*  
12:00 3-1 *Great British Baking Show*  
1:00 3-1 *Masterpiece "Sanditon," Pt. 7*  
2:00 3-1 *Masterpiece "Sanditon," Pt. 8*  
3:00 3-1 *Family Travel*  
3:30 3-1 *RVerS*  
4:00 3-1 *America's Heartland*  
4:30 3-1 *Daytripper*  
5:00 3-1 *Texas Parks and Wildlife*  
5:30 3-1 *BBC World News America*  
6:00 3-1 *PBS NewsHour*

**7:00 3-2 Antiques Roadshow** "Orlando"  
3-1 *Secret Cities "Rome: St. Peter's Basilica"*

**8:00 3-2 Antiques Roadshow** "Harrisburg"  
3-1 *Scotland's Scenic Railways, Pt. 3*

**9:00 3-2 Scotland's Scenic Railways, Pt. 3**  
3-1 *Antiques Roadshow*  
3-3 *Great British Baking Show*

**10:00 3-2 Landscapes Through Time**  
"Cezanne at Mont Sainte Victoire"  
3-1 *Amanpour and Company*  
3-3 *Masterpiece "Sanditon," Pt. 7*

**10:30 3-2 Rick Steves' Europe**  
"Why We Travel"

**11:00 3-2 Antiques Roadshow** "Orlando"  
3-1 *PBS NewsHour*  
3-3 *Masterpiece "Sanditon," Pt. 8*

**12:00 3-2 PBS NewsHour**  
3-1 *Make It Plain with Vernon Jordan*  
3-3 *Violin Alone*

### Tuesday 29th

5:00 3-1 *Classical Stretch*  
5:30 3-1 *Wai Lana Yoga*  
6:00 3-1 *Antiques Roadshow*  
7:00 3-1 *Born to Explore*  
7:30 3-1 *Two for the Road*  
8:00 3-1 *Scotland's Scenic Railways, Pt. 3*  
9:00 3-1 *Growing Bolder*  
9:30 3-1 *Second Opinion*  
10:00 3-1 *Closer to Truth*  
10:30 3-1 *Fishing Behind the Lines*  
11:00 3-1 *Classical Stretch*  
11:30 3-1 *Wai Lana Yoga*  
12:00 3-1 *New Day New Chef*  
12:30 3-1 *Taste of History*  
1:00 3-1 *Secret Cities "London: Underground Megastructures"*  
2:00 3-1 *History Detectives*  
3:00 3-1 *Antiques Roadshow*  
4:00 3-1 *Consuelo Mack Wealthtrack*  
4:30 3-1 *Start Up*  
5:00 3-1 *Firing Line with Margaret Hoover*  
5:30 3-1 *BBC World News America*  
6:00 3-1 *PBS NewsHour*

**7:00 3-2 American Masters** "Laura Ingalls Wilder: From Prairie to Page"  
3-1 *American Experience*  
"Influenza 1918"

8:00 3-1 *Awakening in Taos: The Mabel Dodge Luhan Story*

**8:30 3-2 Anne of Green Gables: Fire & Dew**  
9:00 3-1 *Evening with B.B. King*  
3-3 *Antiques Roadshow*

**10:00 3-2 American Experience**  
"Influenza 1918"  
3-1 *Amanpour and Company*  
3-3 *History Detectives*

**11:00 3-2 Amanpour and Company**  
3-1 *PBS NewsHour*  
3-3 *Nature*

**12:00 3-2 PBS NewsHour**  
3-1 *Cultivating the Wild*  
3-3 *America's Heartland*

### Wednesday 30th

5:00 3-1 *Classical Stretch*  
5:30 3-1 *Wai Lana Yoga*  
6:00 3-1 *Consuelo Mack Wealthtrack*  
6:30 3-1 *Start Up*  
7:00 3-1 *Curious Traveler*  
7:30 3-1 *Burt Wolf: Travels & Traditions*  
8:00 3-1 *History Detectives*  
9:00 3-1 *Around the Farm Table*  
9:30 3-1 *Farmer and the Foodie*  
10:00 3-1 *American Woodshop*  
10:30 3-1 *Woodsmith Shop*  
11:00 3-1 *Classical Stretch*

11:30 3-1 *Sit and Be Fit*  
12:00 3-1 *Sara's Weeknight Meals*  
12:30 3-1 *Cook's Country*  
1:00 3-1 *Food Flirts*  
1:30 3-1 *Kitchen Queens: New Orleans*  
2:00 3-1 *Farmers for America*  
3:00 3-1 *Tastemakers*  
3:30 3-1 *Field Trip*  
4:00 3-1 *Lidia's Kitchen*  
4:30 3-1 *America's Test Kitchen*  
5:00 3-1 *Story in the Public Square*  
5:30 3-1 *BBC World News America*  
6:00 3-1 *PBS NewsHour*

**7:00 3-2 Nature** "Cold Warriors: Wolves and Buffalo"  
3-1 *Anne of Green Gables: Fire & Dew*

**8:00 3-2 Nova** "The Impossible Flight"  
8:30 3-1 *Haleakala: A Trek for Dignity*  
9:00 3-1 *Nature "Cold Warriors: Wolves and Buffalo"*  
3-3 *Roadtrip Nation*  
9:30 3-3 *Make48*

**10:00 3-2 Second Opinion** "Type I Diabetes"  
3-1 *Amanpour and Company*  
3-3 *Charlie Russell's Old West*

**10:30 3-2 This Old House**  
"Chimney Straightener"

**11:00 3-2 Amanpour and Company**  
3-1 *PBS NewsHour*  
3-3 *Curious Traveler*

11:30 3-3 *Burt Wolf: Travels & Traditions*

**12:00 3-2 PBS NewsHour**  
3-1 *Nova "The Impossible Flight"*  
3-3 *In the Americas*

### Thursday 31st

5:00 3-1 *Classical Stretch*  
5:30 3-1 *Wai Lana Yoga*  
6:00 3-1 *IQ: Smartparent*  
6:30 3-1 *Travels with Darley*  
7:00 3-1 *Family Travel*  
7:30 3-1 *RVerS*  
8:00 3-1 *Antiques Roadshow*  
9:00 3-1 *Fons & Porter's Love of Quilting*  
9:30 3-1 *Quilt in a Day*  
10:00 3-1 *Knit and Crochet Now*  
10:30 3-1 *It's Sew Easy*  
11:00 3-1 *Classical Stretch*  
11:30 3-1 *Happy Yoga*  
12:00 3-1 *Milk Street*  
12:30 3-1 *Simply Ming*  
1:00 3-1 *Lucky Chow*  
1:30 3-1 *Les Stroud's Wild Harvest*  
2:00 3-1 *Nature "Cold Warriors: Wolves and Buffalo"*  
3:00 3-1 *Nova "The Impossible Flight"*  
5:00 3-1 *Innovations in Medicine*  
5:30 3-1 *BBC World News America*  
6:00 3-1 *PBS NewsHour*

**7:00 3-2 Live from Lincoln Center** "N.Y. Philharmonic: Sondheim Celebration"  
3-1 *United in Song: Celebrating the Resilience of America*

**8:30 3-2 United in Song: Celebrating the Resilience of America**  
3-1 *American Masters "Laura Ingalls Wilder: From Prairie to Page"*

9:00 3-3 *Born to Explore*  
9:30 3-3 *Two for the Road*

**10:00 3-2 American Masters** "Laura Ingalls Wilder: From Prairie to Page"  
3-1 *Amanpour and Company*  
3-3 *Nature*

11:00 3-1 *PBS NewsHour*  
3-3 *Nova*

**11:30 3-2 Georgia O'Keeffe: A Woman on Paper**

**12:00 3-2 PBS NewsHour**  
3-1 *Chavis Chronicles*

# KENW/KMTH-FM LOG

KENW-FM, Portales, NM, 89.5 MHz — KMTH-FM, Maljamar, NM, 98.7 MHz — KENM-FM, Tucumcari, NM, 88.9 MHz — KENU-FM, Des Moines, NM, 88.5 MHz — KENG-FM, Ruidoso, NM, 88.5 MHz — KENE-FM, Raton, NM, 88.1 MHz

Translators: Apache Springs, 90.9 MHz; Clayton, 93.5 MHz; Des Moines, 106.1 MHz; Ft. Sumner, 91.7 MHz; Las Vegas, 88.1 MHz; Roswell, 91.1 MHz; Wagon Mound, 92.1 MHz.

## Sundays

### 8:00 a.m. WITH HEART AND VOICE

Dec 6 Advent 2: Prophets and Prophecy  
Dec 13 Advent 3: Song of Mary  
Dec 20 A Christmas Celebration  
Dec 27 Christmastide

### 9:00 a.m. FOOTLIGHT PARADE

Dec 6 Spotlight on Sylvia McNair  
Dec 13 Happily Ever After  
Dec 20 Funny Men  
Dec 27 Prime Real Estate

### 10:00 a.m. RADIO LAB

### 11:00 a.m. FRESH AIR WEEKEND

### 12:00 p.m. PEOPLE'S PHARMACY

### 1:00 p.m. THIS AMERICAN LIFE

### 2:00 p.m. FREAKONOMICS

### 3:00 p.m. MOUNTAIN STAGE

Dec 6 Mountain Goats; Joe Henry; Nellie McKay; Jon K. Samson  
Dec 13 Odetta; Mike Seeger; Holly Cole; Victoria Williams; Joan Baez; Kathy Mattea; Bruce Cockburn; Mary Gauthier; Loudon Wainwright III and more.  
Dec 20 Iron & Wine; Tift Merritt; Paper Bird; Todd Burge; Andy Shauf  
Dec 27 Shovels & Rope; Cris Jacobs; Tyler Grant & Robin Kessinger; Kelsey Waldon; Wayne Graham

### 5:00 p.m. THISTLE & SHAMROCK

Dec 6 All in Good Time  
Dec 13 Gifts  
Dec 20 Celtic Christmas  
Dec 27 Solstice

### 6:00 p.m. ALL THINGS CONSIDERED

### 7:00 p.m. PITTSBURGH SYMPHONY ORCHESTRA

Dec 6 VICTORIA: Dum complerentur; Surrexit pastor bonus; Ave Maria; Versa est in luctum  
BRUCKNER: Locus iste; Ave Maria; Symphony No. 4, "Romantic"  
ALLEGRI: Miserere  
Dec 13 RESPIGHI: Overture to Belfagor  
GLASS: Violin Concerto No. 2  
BEETHOVEN: Symphony No. 6  
Dec 20 HANDEL: Messiah  
Dec 27 ROSSINI: Introduction, theme and Variations for Clarinet and Orchestra  
WEBER: Clarinet Concerto No. 1  
STRAUSS, JR: Waltzes and Pokas

### 9:00 p.m. THE ROMANTIC HOUR

Dec 6 Playwright Anton Checkhov and actress Olga Knipper  
Dec 13 Poetry of Hope  
Dec 20 The Relationship between Johannes Brahms and Clara Schumann, Part 1  
Dec 27 The Relationship between Johannes Brahms and Clara Schumann, Part 2

### 10:00 p.m. WEEKEND PERFORMANCE TODAY

### 11:00 p.m. MUSIC OUT OF THE NIGHT AND INTO THE MORNING until 5:00 a.m. when Morning Edition begins.

## Mondays

### 7:00 p.m. CHICAGO SYMPHONY ORCHESTRA

Dec 7 HANDEL: Messiah (Parts 1-3)  
Dec 14 BIZET: Roma  
MASCAGNI: Cavalleria rusticana  
Dec 21 MOZART: Overture to The Marriage of Figaro; Piano Concerto No. 20 in d  
VARESE: Déserts  
STRAVINSKY: Divertimento, Suite from The Fairy's Kiss; Suite from The Firebird (1919 Revision)

Dec 28 BRUCKNER: Psalm 150  
BARTOK: Cantata profana  
BRAHMS: A German Requiem

### 9:00 p.m. PERFORMANCE TODAY

### 11:00 p.m. MUSIC OUT OF THE NIGHT AND INTO THE MORNING until 5:00 a.m. when Morning Edition begins.

## Tuesdays

### 7:00 p.m. NEW YORK PHILHARMONIC

Dec 1 DVORAK: Carnival Overture  
MOZART: Violin Concerto No. 5, Turkish  
BRAHMS: Symphony No. 1  
Dec 8 HAYDN: Symphony No. 95 in c  
MARTINU: Incantation, Piano Concerto No. 4  
SIBELIUS: Symphony No. 1 in e  
Dec 15 BACH: Concerto for Violin and Oboe  
MOZART: Symphony No. 33  
BEETHOVEN: Piano Concerto No. 1  
Dec 22 BRAHMS: Symphony No. 3; Symphony No. 4  
Dec 29 STRAUSS, II: Overture to Die Fledermaus from An Evening with Danny Kaye  
MOZART: German Dance in C, K. 605, "Sleigh Ride"  
BERNARD: Winter Wonderland  
SUESSDORF: Moonlight in Vermont  
ANDERSON: Sleigh Ride

### 9:00 p.m. PERFORMANCE TODAY

### 11:00 p.m. MUSIC OUT OF THE NIGHT AND INTO THE MORNING until 5:00 a.m. when Morning Edition begins.

## Wednesdays

### 7:00 p.m. DEUTSCHE WELLE FESTIVAL CONCERTS

Dec 2 YUN: Li-Na in the Garten No. 5 (Little Bird)  
BEETHOVEN: Sonata No. 5 in F, op. 24 (Spring)  
SZYMANOWSKI: Notturmo and Tarantella, op. 28  
WAXMAN: Carmen Fantasy  
BRUCH: Three pieces from op. 83  
SCHUMANN: Märchenerzählungen (Fairy Tale Stories), op. 132  
Dec 9 MOZART: Piano concerto No. 13 in C  
CHAUSSON: Concerto for violin, piano and string quartet  
BEETHOVEN: Piano trio No. 7 in B-flat  
Dec 16 MENDELSSOHN: Hebrides Overture, adapted for piano-four-hands  
CHOPIN: Sonata in b  
SCHUMANN: A selection from the Spanish Love Songs  
BRAHMS: Neue Liebeslieder (New Love Songs)

Dec 23 FALCONIERI: Folias for recorder, violine and continuo  
MERULA: Folle è ben che si crede; Ciaconna  
CORELLI: Sonata in F, No 10  
HANDEL: Mi palpita il cor  
BACH: Follia for solo harpsichord  
VIVALDI: La Follia, No. 12  
Dec 30 BACH/WEBERN: Fugue in six voices from A Musical Offering  
WEBERN: Orchestral variations, op. 30  
BERG: Three fragments from the opera Wozzeck for soprano, children's chorus and orchestra, op. 7  
SCHNITTKE: Concerto grosso No. 1 for two violins, prepared piano and chamber orchestra  
BEETHOVEN: Three Equals for four trombones; Symphony No. 5 in c

### 9:00 p.m. PERFORMANCE TODAY

### 11:00 p.m. MUSIC OUT OF THE NIGHT AND INTO THE MORNING until 5:00 a.m. when Morning Edition begins.

## Thursdays

### 7:00 p.m. COLLECTORS' CORNER with HENRY FOGEL

Dec 3 The Berlin Philharmonic's release of Furtwängler Broadcasts, 1939 1945 – Program 4



Dec 10 The Berlin Philharmonic's release of Furtwängler Broadcasts, 1939 1945 – Program 5

Dec 17 The Berlin Philharmonic's release of Furtwängler Broadcasts, 1939 1945 – Program 6

Dec 24 28 Hours of Christmas Music starting at 7 pm Thursday Night thru 11:00 p.m. Christmas Day

Dec 31 Ruggero Ricci – Rediscovered Live Recordings – Program 1

**9:00 p.m. PERFORMANCE TODAY**

**11:00 p.m. MUSIC OUT OF THE NIGHT AND INTO THE MORNING** until 5:00 a.m. when **Morning Edition** begins.

### ***Fridays***

**7:00 p.m. CONCIERTO**

**8:00 p.m. FIESTA! With ELBIO BARILARI**

Dec 4 Alicia de Larrocha

Dec 11 Fresh Ink

Dec 18 Revisiting Mexico

Dec 25 28 Hours of Christmas Music starting at 7 pm Thursday Night thru 11:00 p.m. Christmas Day

**9:00 p.m. PERFORMANCE TODAY**

**11:00 p.m. MUSIC OUT OF THE NIGHT AND INTO THE MORNING** until 5:00 a.m. when **People's Pharmacy** begins.

### ***Saturdays***

**8:00 a.m. BEST OF CAR TALK**

**9:00 a.m. WAIT WAIT DON'T TELL ME**

**10:00 a.m. THE BIONEERS: Revolution from the Heart of Nature**

**10:30 a.m. NEW LETTERS ON THE AIR**

**11:00 a.m. METROPOLITAN OPERA**

Dec 5 PROKAFIEV: War and Peace

Dec 12 BEETHOVEN: Fidelio

Dec 19 HUMPERDINCK: Hansel and Gretel

Dec 26 MOZART: The Magic Flute

**3:00 p.m. CLASSICAL GUITAR ALIVE**

**4:00 p.m. MICHAEL JOHNATHAN'S WOOD SONGS OLD TIME RADIO HOUR**

Dec 5 The Bands of The United States Armed Forces

Dec 12 Celebration of Muddy Waters with John Primer, Bob Margolin and Paul Oscher

Dec 19 Wanda Jackson and Billy Bragg

Dec 26 Emmylou Harris, Darrell Scott

**5:00 p.m. WOODSONGS ARCHIVE**

Dec 5 750 AJ Croce and The Grahams

Dec 12 751 Freddy LaBour and Kacey Jones

Dec 19 752 Pink Martini and The von Trapps

Dec 26 753 Donna the Buffalo and Eliza Rickman

**6:00 p.m. ALL THINGS CONSIDERED**

**7:00 p.m. SWINGIN' DOWN THE LANE**

Dec 5 Dave Brubeck Centennial

Dec 12 Sinatra in the Movies 1

Dec 19 Big 2000th

Dec 26 Season's Greetings

**8:00 p.m. JAZZ NIGHT**

**9:00 p.m. JAZZ AT 100**

Dec 5 Acoustic Jazz Lives

Dec 12 The Second Acts of Art Pepper, Dexter Gordon, & Johnny Griffin

Dec 19 Art Blakey and the Young Lions

Dec 26 Whither Freedom?

**10:00 p.m. DREAMFARM RADIO**

**11:00 p.m. MUSIC OUT OF THE NIGHT AND INTO THE MORNING** until 6:00 a.m. when **Weekend Edition** begins.

## **FM Radio Week-at-a-Glance**

	Sunday	Monday	Tuesday	Wednesday	Thursday	Friday	Saturday	Monday through Friday
<b>5:00</b>	Travel with Rick Steves	Morning Edition	Morning Edition	Morning Edition	Morning Edition	Morning Edition	5:00 a.m. People's Pharmacy	Weather: 5:18, 6:18, and 7:18 a.m. Regional News: 5:33, 6:33, and 7:33 a.m.
<b>6:00</b>	Weekend Edition						6:00 a.m. Weekend Edition	
<b>7:00</b>								
<b>8:00</b>	With Heart and Voice	Music News & Features	Music News & Features	Music News & Features	Music News & Features	Music News & Features	8:00 a.m. Car Talk	8:01 Marketplace Report
<b>9:00</b>	Footlight Parade						9:00 a.m. Wait, Wait... Don't Tell Me	8:08 Ski Report
<b>10:00</b>	Radiolab						10:00 a.m. Bioneers	8:15 Kindness Moment
<b>11:00</b>	Fresh Air Weekend with Terry Gross						10:30 a.m. New Letters	8:20 Nature Notes (Tu) Travelers in the Night (W)
<b>12:00</b>	People's Pharmacy (R)						11:00 a.m. The Metropolitan Opera	8:30 Health in a Heartbeat
<b>1:00</b>	This American Life						2:30 p.m. Nothing Funny About Money (when length of opera permits)	8:45 Insight
<b>2:00</b>	Freakonomics						3:00 p.m. Classical Guitar Alive	9:00 Weather/News
<b>3:00</b>	Mountain Stage	2:30 p.m. Here & There with David Marash	Best of Knowledge	51 Percent	With Good Reason	Says You!	4:00 p.m. WoodSongs	9:15 Marketplace Tech Report
<b>3:30</b>		Marketplace	Marketplace	Marketplace	Marketplace	Marketplace	5:00 p.m. WoodSongs Archives	9:20 A Southwest Spotlight (F)
<b>4:00</b>		All Things Considered	All Things Considered	All Things Considered	All Things Considered	All Things Considered		9:30 Disability Awareness
<b>4:30</b>	Thistle & Shamrock							9:45 Fitness Minute/EarthDate
<b>5:00</b>	All Things Considered	PBS NewsHour	PBS NewsHour	PBS NewsHour	PBS NewsHour	PBS NewsHour	All Things Considered	10:00 Weather/News/Regional News
<b>6:00</b>	Pittsburgh Symphony Orchestra	Chicago Symphony Orchestra	New York Philharmonic	Deutsche Welle Festival Orchestra	Collectors' Corner	Concierto with Frank Dominguez	Swingin' Down the Lane	10:15 Engines of Our Ingenuity
<b>7:00</b>	The Romantic Hours	Performance Today	Performance Today	Performance Today	Performance Today	Performance Today	Jazz Night in America	10:30 Composers' Datebook
<b>8:00</b>							Jazz at 100	10:45 The Writer's Almanac
<b>9:00</b>	Performance Today						DreamFarm Radio	11:00 Weather/News
<b>10:00</b>								11:15 Melinda's Garden Moment
<b>11:00</b>	Classical Music Out of the Night until 5:00 a.m.	Classical Music Out of the Night until 5:00 a.m.	Classical Music Out of the Night until 5:00 a.m.	Classical Music Out of the Night until 5:00 a.m.	Classical Music Out of the Night until 5:00 a.m.	Classical Music Out of the Night until 5:00 a.m. when People's Pharmacy begins.	Classical Music Out of the Night until 5:00 a.m. when Travel with Rick Steves	11:30 Pulse of the Planet
								11:45 Climate Connections
								12:00 Weather/News/Regional News
								12:30 Moment in Time/Ski Report
								12:35 Great Arts at Eastern (Th)
								12:45 People's Pharmacy News (M) The Slowdown (T) A Touch on Nature (W) Medical Discoveries News (Th) Science and the Sea (F)
								1:00 Weather/News
								1:15 Sound Beat
								1:30 Loh Down on Science
								1:45 StarDate/The Plant Detective
								2:00 Weather/News/Regional News
								2:15 Bird Note
								2:20 A Southwest Spotlight (W)
								2:30 American Storyteller/Ski Report
								2:45 90 Second Naturalist / Innovation Now
								4:20 Earthdate
								4:50 & 5:50 p.m. Weather
								5:20 Pulse of the Planet
								6:57 StarDate/Weather
								9:00 Weather/News
								12:00/3:00 a.m. Weather/News

# BUSINESS FRIENDS

 <p><b>Taylor Water Well Service</b> Water Well Drilling Pump Sales &amp; Service</p> <p>Carlsbad, NM This American Life, FM Wait, Wait...Don't Tell Me, FM Radio Lab, FM</p>	 <p>Hobbs, NM All Things Considered, FM</p>	 <p>Roswell, NM Nature, BBC World News America, Star Gazers</p>	 <p>Pharmacy... At your Service Portales, NM Fitness Minute, Classical Guitar Alive, FM Mt. Stage, FM</p>	 <p>Carlsbad, NM In support of FM programming</p>	 <p>VALLEY MOWER CLINIC, INC Clovis, NM P. Allen Smith's Garden Home</p>
 <p>Portales, NM Nova</p>	 <p>Raton, NM Morning Edition, FM All Things Considered, FM</p>	 <p>Las Vegas, NM Insight Weekend Programming, FM</p>	 <p>Clovis, Eunice, Hagerman, Hobbs, Portales, Roswell, Carlsbad Austin City Limits</p>	 <p>Roswell, NM Classic Gospel</p>	 <p>Roswell, NM Morning Edition, FM Jazz Programming, FM</p>
 <p>Clovis and Portales, NM Nature</p>	 <p>Farwell, TX Antiques Roadshow</p>	 <p>Roswell, NM Evening Symphonies, FM</p>	 <p>Farmers' Electric Cooperative, Inc. of New Mexico Clovis, NM Ask This Old House</p>	 <p>Las Cruces, NM America's Heartland</p>	 <p>Roswell, NM Piano Jazz, FM Jazz Programming, FM</p>
 <p>Roswell, NM With Heart and Voice, FM</p>	 <p>Ruidoso, NM Morning Edition, FM</p>	 <p>Portales, NM Antiques Roadshow</p>	 <p>Open Every Day Except Christmas Carlsbad, NM Austin City Limits, Nature, PBS NewsHour</p>	 <p>Portales, NM Pharmacy... At your Service Antiques Roadshow, Health related programs, Report from Santa Fe, Sportslook</p>	 <p>Evening News/Public Affairs BBC World News News 3 New Mexico</p>
 <p>PBS NewsHour Washington Week</p>	 <p>David Bonner Portales, NM Car Talk, FM</p>	 <p>Telephone Book Evening News/Public Affairs Programming News 3 New Mexico</p>	 <p>FM Programming</p>	 <p>Dexter and Roswell, NM America's Heartland</p>	 <p>Roswell, NM American Experience, Masterpiece, Nova, PBS NewsHour</p>
 <p>In support of FM programming</p>	 <p>Attorneys at Law Roswell, NM Evening Symphony, FM All Things Considered, FM</p>	 <p>Portales, NM Sesame Street</p>	 <p>Clovis and Portales, NM Wait, Wait...Don't Tell Me, FM</p>	 <p>Made possible by the New Mexico Lodgers Tax Carlsbad, NM Nova America's Heartland</p>	 <p>Clovis and Portales, NM Austin City Limits</p>

When to watch from **A to Z**

Channel 3-1 – December 2020

**Amanpour and Company** – Mondays-Fridays, 10:00 p.m.  
**American Woodshop** – Wednesdays, 10:00 a.m.  
**America's Heartland** – Mondays, 4:00 p.m.; Fridays, 6:00 a.m.  
**America's Test Kitchen** – Saturdays, 3:00 p.m.; Wednesdays, 4:30 p.m.  
**Antiques Roadshow** – Mondays, 9:00 p.m.; Tuesdays, 6:00 a.m./3:00 p.m.;  
 Thursdays, 8:00 a.m.; Saturdays, 6:00 p.m.  
**Around the Farm Table** – Wednesdays, 9:00 a.m.  
**Ask This Old House** – Fridays, 12:30 p.m.; Saturdays, 1:00 p.m./2:00 p.m.  
**Austin City Limits** – Saturdays, 10:00 p.m.  
**BBC World News America** – Mondays-Fridays, 5:30 p.m.  
**Beauty of Oil Painting** – Fridays, 10:30 a.m.  
**Born to Explore** – Thursdays, 3:00 p.m. (except 31st); Tuesdays, 7:00 a.m.  
**Burt Wolf: Travels & Traditions** – Wednesdays, 7:30 a.m.  
**Changing Seas** – Thursdays, 3:30 p.m. (except 31st)  
**Chef's Life** – Wednesdays, 1:00 p.m. (ends 2nd)  
**Christopher Kimball's Milk Street TV** – Thursdays, 12:00 noon  
**Civil Discourse** – Fridays, 5:00 p.m.  
**Classical Stretch** – Mondays-Fridays, 5:00 a.m./11:00 a.m.  
**Closer to Truth** – Tuesdays, 10:00 a.m.  
**Consuelo Mack Wealthtrack** – Sundays, 1:00 p.m. (except 6th);  
 Tuesdays, 4:00 p.m.; Wednesdays, 6:00 a.m.  
**Cook's Country** – Saturdays, 3:30 p.m.; Wednesdays, 12:30 p.m.  
**Creative Living** – Thursdays, 9:00 p.m. (10th, 17th only); Fridays, 2:00 p.m.  
**Cultura** – Sunday, 20th, 11:30 a.m.  
**Curious Traveler** – Wednesdays, 7:00 a.m.  
**Daytripper** – Mondays, 4:30 p.m.  
**Dining with the Chef** – Fridays, 3:30 p.m.  
**DW In Good Shape** – Fridays, 4:00 p.m.  
**Family Travel** – Mondays, 3:00 p.m. (except 14th, 21st);  
 Thursdays, 7:00 a.m.  
**Farmer and the Foodie** – Wednesdays, 9:30 a.m.

**Field Trip with Curtis Stone** – Wednesdays, 3:30 p.m.  
**Firing Line with Margaret Hoover** – Fridays, 7:30 p.m. (except 4th);  
 Tuesdays, 5:00 p.m.  
**Fishing Behind the Lines** – Tuesdays, 10:30 a.m.  
**Fons & Porter's Love of Quilting** – Thursdays, 9:00 a.m.  
**Food Flirts** – Saturdays, 2:30 p.m. Wednesdays, 1:00 p.m. (begins 9th)  
**Frontline** –  
 "Growing Up Poor in America" – Friday, 11th, 9:00 p.m.  
 "I Am Not a Monster" – Friday, 18th, 9:00 p.m.  
**Great British Baking Show** – Sundays, 3:00 p.m.; Mondays, 12:00 noon  
**Growing a Greener World** – Fridays, 6:30 a.m.  
**Growing Bolder** – Tuesdays, 9:00 a.m.  
**Gzero World with Ian Bremmer** – Fridays, 4:30 p.m.  
**Happy Yoga with Sarah Starr** – Thursdays, 11:30 a.m.  
**History Detectives** – Tuesdays, 2:00 p.m.; Wednesdays, 8:00 a.m.  
**In The Americas with David Yetman** – Mondays, 7:00 a.m.  
**Innovations in Medicine** – Thursdays, 5:00 p.m.  
**IQ: Smartparent** – Thursdays, 6:00 a.m.  
**It's Sew Easy** – Thursdays, 10:30 a.m.  
**J Schwanke's Life in Bloom** – Sundays, 2:30 p.m.  
**Jazzy Vegetarian** – Mondays, 10:30 a.m.  
**Joseph Rosendo's Travelscope** – Mondays, 7:30 a.m.  
**Journeys in Japan** – Fridays, 3:00 p.m.  
**Joy of Painting** – Fridays, 10:00 a.m.  
**Kevin Belton's New Orleans Celebrations** –  
 Saturdays, 11:00 a.m. (except 5th); Mondays, 9:30 a.m.  
**Kitchen Queens: New Orleans** – Wednesdays, 1:30 p.m.  
**Knit and Crochet Now** – Thursdays, 10:00 a.m.  
**Laura Flanders Show** – Sundays, 5:30 p.m. (begins 13th)  
**Les Stroud's Wild Harvest** – Thursdays, 1:30 p.m.  
**Lidia's Kitchen** – Wednesdays, 4:00 p.m.



## Channel 3-1 Continued

**Lost River Sessions** – Fridays, 8:30 a.m.  
**Lucky Chow** – Thursdays, 1:00 p.m.  
**Make It Artsy** – Fridays, 1:00 p.m.  
**Market to Market** – Sundays, 1:30 p.m.  
**Masterpiece** –  
    **"50 Fabulous Years!"** – Sunday, 6th, 7:00 p.m.  
    **"Miniaturist"** (3 Pts.) – Sundays, 9:00 p.m. (begins 13th)  
    **"Sanditon"** (8 Pts.) –  
        Pts. 1-3 – Sunday, 13th, 6:00 p.m.–9:00 p.m.;  
        Monday, 14th, 1:00 p.m.–4:00 p.m.;  
        Pts. 4-6 – Sunday, 20th, 6:00 p.m.–9:00 p.m.;  
        Monday, 21st, 1:00 p.m.–4:00 p.m.  
        Pts. 7-8 – Sunday, 27th, 6:00 p.m.–8:00 p.m.;  
        Monday, 28th, 1:00 p.m.–2:00 p.m.  
**Motorweek** – Saturdays, 1:30 p.m.  
**Nature** – Wednesdays, 9:00 p.m. (except 2nd); Thursdays, 2:00 p.m.;  
    Saturdays, 4:00 p.m.  
    **"The Cheetah Children"** – 3rd (Th); 5th (Sa)  
    **"Snow Bears"** – 9th (W); 10th (Th); 12th (Sa)  
    **"Animal Odd Couples"** – 16th (W); 17th (Th); 19th (Sa)  
    **"Snowbound: Animals of Winter"** – 23rd (W); 24th (Th); 26th (Sa)  
    **"Cold Warriors: Wolves and Buffalo"** – 30th (W); 31st (Th)  
**New Day New Chef** – Tuesdays, 12:00 noon  
**New Mexico Colores** – Sundays, 11:30 a.m. (13th and 27th only)  
**New Mexico In Focus** – Sundays, 12:00 noon (except 6th);  
    Mondays, 6:00 a.m.  
**Nick Stellino: Storyteller in the Kitchen** – Mondays, 8:30 a.m.  
**Nova** – Thursdays, 4:00 p.m.; Fridays, 8:00 p.m.;  
    Saturdays, 11:00 p.m.; Sundays, 4:00 p.m.  
    **"Secrets of the Forbidden City"** – 3rd (Th); 5th (Sa); 6th (Su)  
    **"Mysteries of Sleep"** – 4th (F) 8:30 p.m.  
    **"Bird Brain"** – 10th (Th); 11th (Fr); 12th (Sa); 13th (Su)  
    **"Einstein's Quantum Riddle"** –  
        17th (Th); 18th (Fr); 19th (Sa); 20th (Su)  
    **"Pluto and Beyond"** – 24th(Th); 25th (Fr); 26th (Sa); 27th(Su)  
    **"The Impossible Flight"** – 31st (Th)  
**P. Allen Smith's Garden Home** – Sundays, 2:00 p.m.;  
    Mondays, 10:00 a.m.  
**Pati's Mexican Table** – Saturdays, 11:30 a.m. (except 5th);  
    Mondays, 9:00 a.m.  
**PBS Newshour** – Mondays – Fridays, 6:00 p.m./11:00 p.m.  
**PBS Newshour Weekend** – Saturdays and Sundays, 5:00 p.m.  
**Quilt in A Day** – Thursdays, 9:30 a.m.  
**Red Green Show** – Thursdays, 8:00 p.m. (10th and 17th only)  
**Re'flect: Successful Aging Defined** – Tuesdays, 8:30 a.m. (ends 8th)  
**Report from Santa Fe** – Saturdays, 5:30 p.m.  
**Rick Steves' Europe** – Mondays, 8:00 a.m.  
**RVers** – Mondays, 3:30 p.m. (except 14th and 21st);  
    Thursdays, 7:30 a.m.  
**Sara's Weeknight Meals** – Wednesdays, 12:00 noon  
**Second Opinion** – Tuesdays, 9:30 a.m.  
**Simply Ming** – Thursdays, 12:30 p.m.  
**Sit and Be Fit** – Mondays/Wednesdays/Fridays, 11:30 a.m.  
**Song of the Mountains** – Fridays, 7:00 a.m.  
**Start Up** – Tuesdays, 4:30 p.m.; Wednesdays, 6:30 a.m.  
**Story in the Public Square** – Wednesdays, 5:00 p.m.  
**Sun Studio Sessions** – Fridays, 8:00 a.m.  
**Taste of History** – Tuesdays, 12:30 p.m.  
**Tastemakers** – Wednesdays, 3:00 p.m.  
**Texas Parks and Wildlife** – Mondays, 5:00 p.m.  
**This Old House** – Saturdays, 12:00 noon (except 5th)/12:30 p.m.;  
    Fridays, 12:00 noon  
**Travels with Darley** – Thursdays, 6:30 a.m.  
**Two for the Road** – Wednesdays, 2:30 p.m. (except 30th);  
    Tuesdays, 7:30 a.m.  
**Wai Lana Yoga** – Mondays–Thursdays, 5:30 a.m.; Tuesdays, 11:30 a.m.  
**Washington Week** – Fridays, 7:00 p.m. (except 4th);  
    Sundays, 11:00 a.m.  
**Weekends with Yankee** – Fridays, 2:30 p.m.  
**Welcome to My Studio** – Fridays, 1:30 p.m.  
**Woodsmith Shop** – Wednesdays, 10:30 a.m.  
**Woodsongs** – Fridays, 9:00 a.m.  
**Yoga in Practice** – Fridays, 5:30 a.m.  
**You Should Know** – Thursdays, 8:30 p.m. (10th and 17th only)

## December 3-1 Specials

**All Is Calm: The Christmas Truce of 1914** – Thursday, 24th, 8:30 p.m.  
**American Experience** –  
    **"Into The Amazon"** (2 Hrs.) – Sunday, 20th, 10:00 p.m.  
    **"Surviving the Dust Bowl"** – Tuesday, 22nd, 7:00 p.m.  
    **"Greely Expedition"** – Sunday, 27th, 10:00 p.m.  
    **"Influenza 1918"** – Tuesday, 29th, 7:00 p.m.  
**American Masters** –  
    **"Miles Davis"** – Wednesday, 16th, 7:00 p.m.  
    **"Lennon NYC"** – Wednesday, 23rd, 7:00 p.m.  
    **"Laura Ingalls Wilder: Prairie to Page"** – Thursday, 31st, 8:30 p.m.  
**American Medevac** – Tuesday, 8th, 9:00 p.m.  
**Anne of Green Gables: Fire & Dew** – Wednesday, 30th, 7:00 p.m.  
**Art of Aging Well** – Tuesday, 1st, 8:00 a.m.  
**Awakening in Taos: The Mabel Dodge Luhan Story** –  
    Tuesday, 29th, 8:00 p.m.  
**Bee Gees: One Night Only** – Saturday, 5th, 7:00 p.m.; Monday, 7th, 1:00 p.m.  
**Book Makers** – Tuesday, 1st, 1:00 p.m.  
**Brain Revolution** – Friday, 4th, 7:00 p.m.  
**BSO 360** (Pt. 5) – Sunday, 6th, 10:00 p.m.  
**Call The Midwife Holiday Special 2020** – Saturday, 26th, 8:00 p.m.  
**Charlie Russell's Old West** – Saturday, 12th, 9:00 p.m.;  
    Tuesday, 22nd, 8:00 p.m.  
**Children's Crusade Revisited: Slaughterhouse-Five at 50** –  
    Monday, 7th, 8:30 p.m.  
**Christmas at Belmont** – Thursday, 17th, 7:00 p.m.  
**Christmas on the Danube** – Thursday, 17th, 9:30 p.m.  
**Christmas with the Tabernacle Choir featuring Kelli O'Hara and  
    Richard Thomas** – Saturday, 19th, 8:00 p.m.  
**Christmastime in New Orleans** – Sunday, 13th, 10:00 p.m.  
**Craft in America** – Saturday, 12th, 8:00 p.m.  
**Cultivating the Wild** – Saturday, 19th, 9:00 p.m.  
**Design in Mind: On Location** – Saturday, 26th, 9:30 p.m.  
**Dolly Parton: I Will Always Love You** – Thursday, 3rd, 7:00 p.m.  
**Ella Wishes You a Swinging Christmas** – Saturday, 19th, 7:00 p.m.  
**ENMU Virtual Commencement Fall 2020** – Saturday, 12th, 10:00 a.m.  
**European Christmas Markets** – Thursday, 10th, 9:30 p.m.  
**Evening with Harry Belafonte** (interview) – Tuesday, 15th, 9:00 p.m.  
**Evening with Dionne Warwick** (interview) – Tuesday, 22nd, 9:00 p.m.  
**Evening with B.B. King** (interview) – Tuesday, 29th, 9:00 p.m.  
**Farmers for America** – Wednesday, 30th, 2:00 p.m.  
**Flying J's White Mountain Christmas** – Saturday, 12th, 7:00 p.m.;  
    Friday, 25th, 9:00 p.m.  
**Great Performances "Lea Salonga in Concert"** –  
    Tuesday, 1st, 8:30 p.m.; Monday, 7th, 2:00 p.m.  
**Haleakala: A Trek for Dignity** – Wednesday, 30th, 8:30 p.m.  
**Hank Locklin: Country Music's Timeless Tenor** – Thursday, 10th, 7:00 p.m.  
**John Denver: Country Roads – Live in England** –  
    Thursday, 3rd, 8:30 p.m.  
**Josh Groban: An Evening of Harmony** – Saturday, 5th, 8:30 p.m.  
**Ken Burns: Here & There** – Wednesday, 2nd, 7:00 p.m.  
**Ledisi Live: A Tribute to Nina Simone** – Tuesday, 1st, 7:00 p.m.  
**Lifeline: Pearl Harbor's Unknown Hero** – Monday, 7th, 7:00 p.m.  
**Lucy Worsley's 12 Days of Tudor Christmas** –  
    Saturday, 5th, 11:00 a.m.; Sunday, 27th, 8:00 p.m.  
**Magic of Christmas in Alsace** – Wednesday, 23rd, 2:00 p.m.;  
    Thursday, 24th, 8:00 p.m.  
**Master Your Future with Rajiv Nagaich** – Wednesday, 2nd, 8:30 p.m.  
**Ornament of the World** – Wednesday, 9th, 7:00 p.m.  
**Peter Bence: Around the World** – Sunday, 6th, 8:30 p.m.  
**Portillo Expedition: Mystery at Bougainville Island** –  
    Sunday, 13th, 10:30 p.m.  
**Reconstruction: America After the Civil War** (two 2 Hr. episodes) –  
    Tuesdays, 8th & 15th, 7:00 p.m.  
**Remember Pearl Harbor** – Sunday, 6th, 10:30 p.m.  
**Scotland's Scenic Railways** (3 Pts.) –  
    Mondays, 8:00 p.m. (begins 14th); Tuesdays, 8:00 a.m. (begins 15th)  
**Secret Cities** (3 Pts.) – Mondays, 7:00 p.m. (begins 14th);  
    Tuesdays, 1:00 p.m. (begins 15th)  
**Sleep Deprived** – Tuesday, 8th, 8:00 a.m.  
**St. Olaf Christmas Festival: A New Song of Joy and Hope** –  
    Thursday, 24th, 7:00 p.m.  
**Stevie Nicks: 24 Karat Gold Tour** – Sunday, 6th, 5:30 p.m.  
**United in Song: Celebrating The Resilience of America** –  
    Thursday, 31st, 7:00 p.m.  
**Violin Alone** – Saturday, 26th, 7:00 p.m.  
**What to Eat When** – Sunday, 6th, 11:30 a.m.  
**Wilder Than Wild: Fire, Forests and the Future** –  
    Sunday, 27th, 11:00 p.m.





Non-Profit Org.  
US Postage  
**PAID**  
Slate Group

# Scotland's Scenic Railways

Travel beneath vast mountains and over wide open moors, alongside dark lochs and glittering seas. Scotland has never looked more breathtaking than from the train window of the railway voted the world's most beautiful.

Sundays, 2:00 p.m. beginning 13th (3-2)  
Mondays, 9:00 p.m. beginning 14th (3-2)

Mondays, 8:00 p.m. beginning 14th (3-1)  
Tuesdays, 8:00 a.m. beginning 15th (3-1)